

Suave planter ø55x100 cm

by Marcel Wanders

Meticulously designed for Vondom, Marcel Wanders' Suave collection of upholstered outdoor furniture redefines the conventional boundaries between indoor and outdoor living, seamlessly blending softness, comfort and relaxation into a harmonious symphony of luxury. With exquisite attention to detail and unparalleled finishes, each piece exudes sophistication and elegance, transforming any outdoor space into a veritable oasis of style, tranquility and indulgence, where every moment is an invitation to unwind and savor life's finer pleasures.

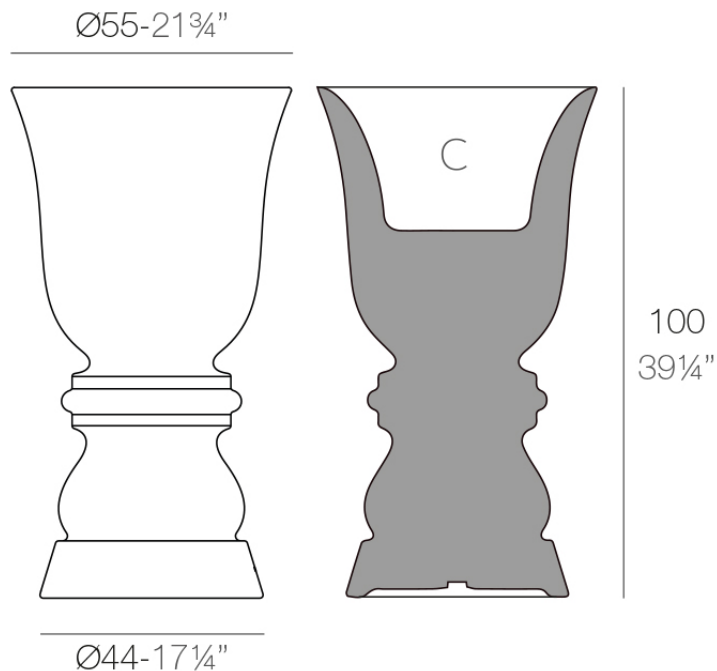


Info

Description

Pot made of polyethylene resin by rotational moulding. 100% Recyclable. Item suitable for indoor and outdoor use. Available in different finishes.

Weight: 10.7 Kg



SUAVE Macetero 100 cm
SUAVE Planter 39 $\frac{1}{4}$ "

C = 82 L
C = 21 $\frac{3}{4}$ gal

Finishes

finishes

BASIC

Ref. 67012A



green



purjai red



orange



ice



notte blue



crema



white



black



bronze



steel



anthracite



red



khaki



taupe



ecru



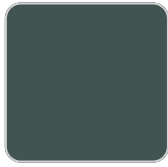
beige

Matt Polyethylene

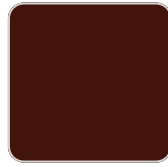
SELF-WATERING

Ref. 67012R

VONDOM



green



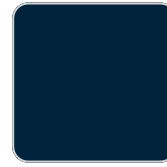
purjai red



orange



ice



notte blue



crema



white



black



bronze



steel



anthracite



red



khaki



taupe



ecru



beige

Self-watering system included in all planters except those with basic finish

LACQUERED

Ref. 67012RF



purjai red



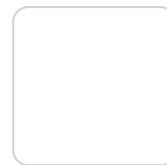
orange



notte blue



crema



white



black



bronze



steel



anthracite



red

VONDOM



khaki



taupe



ecru



beige



modo green



champany

Lacquered Polyethylene

lighting

WHITE LED
Ref. 67012W



ice

White internally lit unit with LED technology. Available only in matte ice white finish.

RGBW LED
Ref. 67012L



ice

Unit with internal lighting with RGBW LED technology and remote control unit for switching colors. Available only in matte ice white finish. Remote control included.

RGBW LED BATTERY

Ref. 67012Y



ice

Unit with internal lighting with battery-powered RGBW LED technology. Includes charger and remote control for switching colors and charger. Available only in matte ice white finish.

RGBW LED DMX BATTERY

Ref. 67012DY



ice

Unit with internal lighting with RGBW LED technology and remote control unit for switching colors. Also controlled by DMX-1024 (wireless), enabling communication between one or more products simultaneously via the DMX transmitter (not included). There are two options to choose from: Professional XLR DMX and Home WIFI DMX. (Remote control included).

Ambients

