

## Mari-sol 3-legged double table base

by Eugeni Quitllet

Created by designer Eugeni Quitllet for Vondom, the Mari-sol collection embodies a harmonious blend of form and function, presenting a masterpiece of contemporary design that seamlessly **blends technological innovation with captivating aesthetics**. At its core is a stunning designer table that serves as the centerpiece of outdoor spaces, captivating the senses with its seductive allure and timeless elegance. This collection redefines the essence of outdoor living, offering a symphony of style and sophistication that transcends boundaries. The Mari-sol table and its companion pieces are the ideal choice for enhancing patios and terraces around the globe, transforming any outdoor space into a luxurious retreat. With its thoughtful design and modern appeal, the Mari-sol collection transforms everyday moments into extraordinary experiences, inviting people to enjoy the beauty of outdoor living.



## Info

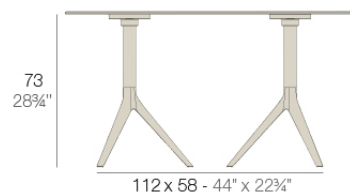
---

### Description

Extruded aluminum tube with cast aluminum base coated with epoxy baked painting. Item suitable for indoor and outdoor use. Table top not included.

Weight: 6.88 Kg

BASE 3 LEGS - BASE 3 PATAS



fixed top / fijo *ref.65031*

collapsible top / abatible *ref.65031T*

MARI-SOL BASE DOBLE 112x58 H73

MARI-SOL DOUBLE BASE 44x22<sup>3</sup>/<sub>4</sub>" H28<sup>3</sup>/<sub>4</sub>"

TABLE TOPS OPTIONS - OPCIONES SOBRES



## Finishes

---

### finishes

---

#### ALUMINIUM BASE

Ref. 65031T



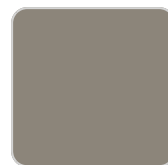
white



smoked



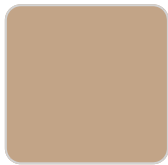
ecru



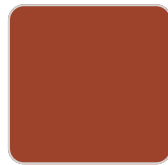
tortora



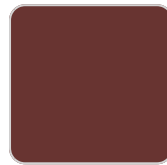
cream



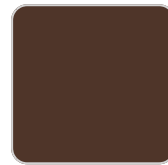
camel



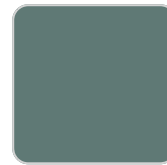
clay



garnet



brown



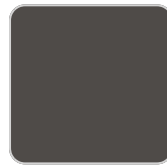
green



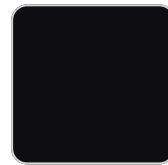
blue



gray



anthracite



black



ocean

Powder coated aluminum base with 90° collapsable attachment made of polyamide and fiber glass

### tabletops

---

HPL

Ref. 66031

# VONDOM



white 201



ecru 2003



black 2002

HPL black edge

