

Bloom planter

by Eugeni Quitllet

Bloom LED lamp-planter collection, designed by Eugeni Quitllet for Vondom. In a metaphorical sense, this collection **embodies the blossoming phase observed in nature.**

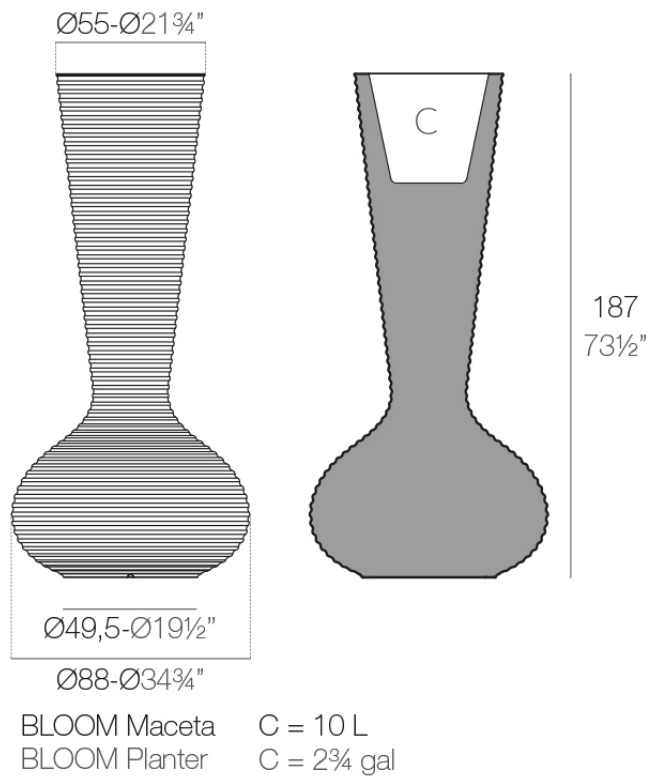


Info

Description

Made of polyethylene resin by rotational moulding. 100% Recyclable. Item suitable for indoor and outdoor use. Available in different finishes.

Weight: 35.06 Kg



Finishes

finishes

BASIC

Ref. 65019A



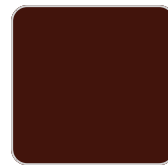
notte blue



orange



crema



purjai red



white



black



bronze



steel



anthracite



red



khaki



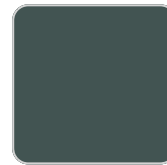
taupe



ecru



beige



green



ice

Matt Polyethylene

SELF-WATERING

Ref. 65019R

VONDOM



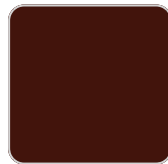
notte blue



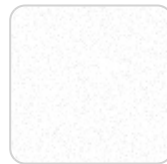
orange



crema



purjai red



white



black



bronze



steel



anthracite



red



khaki



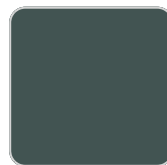
taupe



ecru



beige



green



ice

Self-watering system included in all planters except those with basic finish

LACQUERED

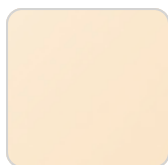
Ref. 65019F



notte blue



orange



crema



modo green



purjai red



white



black



bronze



steel



anthracite

VONDOM



champagne



red



khaki



taupe



ecru



beige

Lacquered Polyethylene

lighting

WHITE LED
Ref. 65019W



ice

White internally lit unit with LED technology. Available only in matte ice white finish.

RGBW LED
Ref. 65019L



ice

Unit with internal lighting with RGBW LED technology and remote control unit for switching colors. Available only in matte ice white finish. Remote control included.

VONDOM

RGBW LED DMX

Ref. 65019D



ice

Unit with internal lighting with RGBW LED technology and remote control unit for switching colors. Also controlled by DMX-1024 (wireless), enabling communication between one or more products simultaneously via the DMX transmitter (not included). There are two options to choose from: Professional XLR DMX and Home WIFI DMX. (Remote control included).

Optional battery

RGBW LED BATTERY

Ref. 65019Y

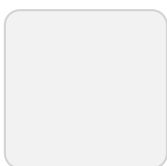


ice

Unit with internal lighting with battery-powered RGBW LED technology. Includes charger and remote control for switching colors and charger. Available only in matte ice white finish.

RGBW LED DMX BATTERY

Ref. 65019DY



ice

Unit with internal lighting with RGBW LED technology and remote control unit for

VONDOM

switching colors. Also controlled by DMX-1024 (wireless), enabling communication between one or more products simultaneously via the DMX transmitter (not included). There are two options to choose from: Professional XLR DMX and Home WIFI DMX. (Remote control included).

Ambients

