

Mari-sol table base h:50cm

by Eugeni Quitllet

Created by designer Eugeni Quitllet for Vondom, the Mari-sol collection embodies a harmonious blend of form and function, presenting a masterpiece of contemporary design that seamlessly **blends technological innovation with captivating aesthetics**. At its core is a designer table that serves as the centerpiece of outdoor spaces, captivating the senses with its seductive allure and timeless elegance. This collection redefines the essence of outdoor living, offering a symphony of style and sophistication that transcends boundaries, making it the ideal choice for enhancing terraces worldwide.



Info

Description

Extruded aluminum tube with cast aluminum base coated with epoxy baked painting. Item suitable for indoor and outdoor use. Table top not included.

Weight: 3.53 Kg

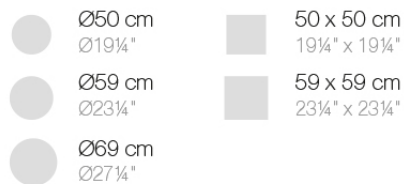
BASE 3 LEGS - BASE 3 PATAS



fixed top / fijo ref. 65009
collapsible top / abatible ref. 65009T
fixed for glass / fijo para vidrio ref. 65009V

MARI-SOL BASE MESA Ø62 H50
MARI-SOL TABLE BASE Ø24 1/2" H19 3/4"

TABLE TOPS OPTIONS - OPCIONES SOBRES



Finishes

finishes

ALUMINIUM BASE

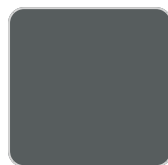
Ref. 65009V



white



british gray



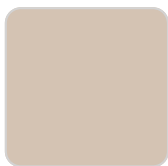
traffic gray



black



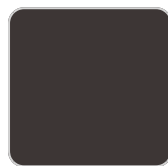
ecru



crema



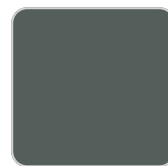
castoro fiber



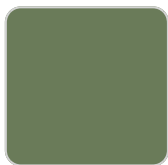
cacao



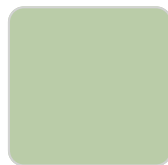
notte blue



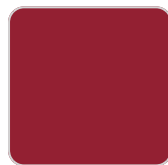
modo green



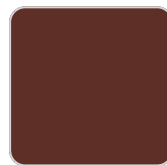
pickle



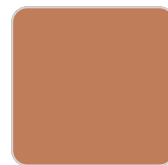
almond



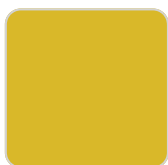
red



purjai red



melon



mostaza

Powder coated aluminum base with non collapsable aluminum attachment powder coated, made exclusively for our glass tops.

Ambients

