

Bones planter 52x44x70

by Ludovica + Roberto Palomba

Bones the elegant designer planter collection by the italian architects Ludovica+Roberto Palomba for Vondom.

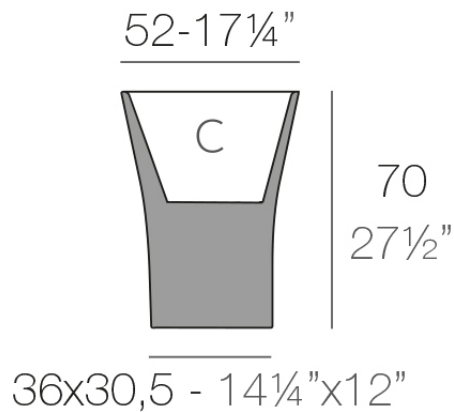


Info

Description

Pot made of polyethylene resin by rotational moulding. 100% Recyclable. Item suitable for indoor and outdoor use. Available in different finishes.

Weight: 6 Kg



BONES Maceta 70
BONES Planter 70

C = 29 L
C = 7 $\frac{3}{4}$ gal

Finishes

finishes

BASIC

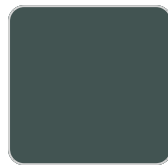
Ref. 57002A



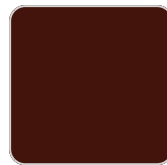
ice



crema



green



purjai red



orange



notte blue



white



black



bronze



steel



anthracite



red



khaki



taupe



ecru



beige

Matt Polyethylene

SELF-WATERING

Ref. 57002R

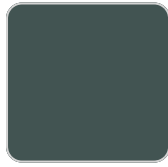
VONDOM



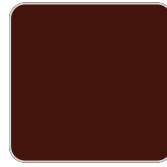
ice



crema



green



purjai red



orange



notte blue



white



black



bronze



steel



anthracite



red



khaki



taupe



ecru



beige

Self-watering system included in all planters except those with basic finish

LACQUERED

Ref. 57002F



crema



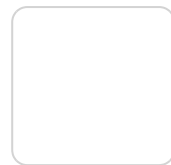
purjai red



orange



notte blue



white



black



bronze



steel



anthracite



red

VONDOM



khaki



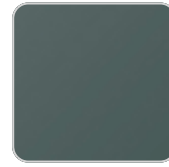
taupe



ecru



beige



modo green



champany

Lacquered Polyethylene

lighting

WHITE LED
Ref. 57002W



ice

White internally lit unit with LED technology. Available only in matte ice white finish.

RGBW LED
Ref. 57002L



ice

Unit with internal lighting with RGBW LED technology and remote control unit for switching colors. Available only in matte ice white finish. Remote control included.

VONDOM

RGBW LED DMX Ref. 57002D



ice

Unit with internal lighting with RGBW LED technology and remote control unit for switching colors. Also controlled by DMX-1024 (wireless), enabling communication between one or more products simultaneously via the DMX transmitter (not included). There are two options to choose from: Professional XLR DMX and Home WIFI DMX. (Remote control included).
Optional battery

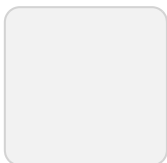
RGBW LED BATTERY Ref. 57002Y



ice

Unit with internal lighting with battery-powered RGBW LED technology. Includes charger and remote control for switching colors and charger. Available only in matte ice white finish.

RGBW LED DMX BATTERY Ref. 57002DY



ice

Unit with internal lighting with RGBW LED technology and remote control unit for

VONDOM

switching colors. Also controlled by DMX-1024 (wireless), enabling communication between one or more products simultaneously via the DMX transmitter (not included). There are two options to choose from: Professional XLR DMX and Home WIFI DMX. (Remote control included).

Ambients

