

Incasso swivel armchair

by Archirivolto Design

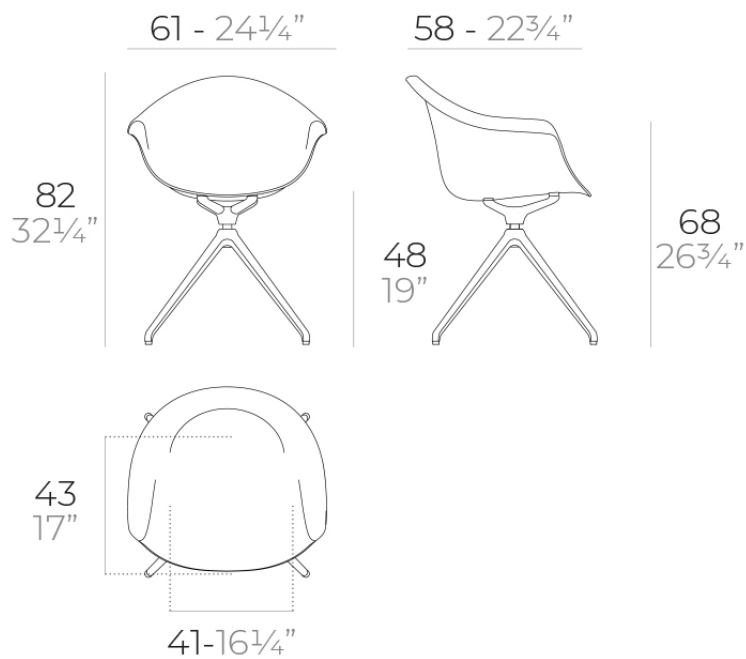


Info

Description

Made from polypropylene and reinforced with fiberglass manufactured by gas injection. Available in various colors. Suitable for indoor and outdoor use.

Weight: 8.6 Kg



INCASSO Sillón giratorio
INCASSO Swivel Armchair

Finishes

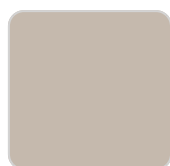
finishes

BASIC PP

Ref. 56031



white



ecru



black

Available in various colors

legs

LEGS

Ref. 65053E



white 201



black 2002

Ambients

