

## Blow planter 100x100x75

by Stefano Giovannoni

**Blow Collection**, designed by **Stefano Giovannoni** for **Vondom**, comes from the motivation to create a **fresh line of indoor-outdoor design furniture** that resonate with the **Pillow family** yet differ in style.



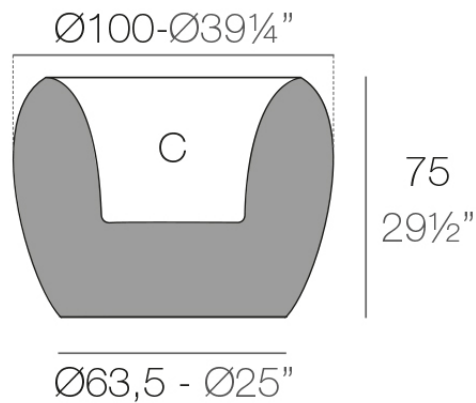
## Info

---

### Description

Pots made of polyethylene resin by rotational moulding. 100% Recyclable. Item suitable for indoor and outdoor use. Available in different finishes.

Weight: 25.08 Kg



BLOW Macetero 100x75  
BLOW Planter 100x75

C = 104 L  
C =  $27\frac{1}{2}$  gal

## Finishes

---

### finishes

---

#### BASIC

Ref. 55021A



purjai red



orange



notte blue



crema



ice



green



white



black



bronze



steel



anthracite



red



khaki



taupe



ecru



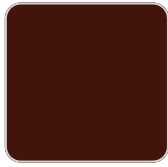
beige

#### Matt Polyethylene

#### SELF-WATERING

Ref. 55021R

# VONDOM



purjai red



orange



notte blue



crema



ice



green



white



black



bronze



steel



anthracite



red



khaki



taupe



ecru



beige

Self-watering system included in all planters except those with basic finish

## LACQUERED

Ref. 55021F



purjai red



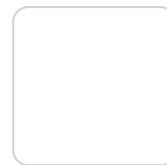
orange



notte blue



crema



white



black



bronze



steel



anthracite



red

# VONDOM



khaki



taupe



ecru



beige



modo green



champany

Lacquered Polyethylene

## lighting

---

WHITE LED  
Ref. 55021W



ice

White internally lit unit with LED technology. Available only in matte ice white finish.

RGBW LED  
Ref. 55021L



ice

Unit with internal lighting with RGBW LED technology and remote control unit for switching colors. Available only in matte ice white finish. Remote control included.

# VONDOM

## RGBW LED DMX

Ref. 55021D



ice

Unit with internal lighting with RGBW LED technology and remote control unit for switching colors. Also controlled by DMX-1024 (wireless), enabling communication between one or more products simultaneously via the DMX transmitter (not included). There are two options to choose from: Professional XLR DMX and Home WIFI DMX. (Remote control included).

Optional battery

## RGBW LED BATTERY

Ref. 55021Y

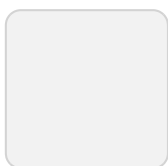


ice

Unit with internal lighting with battery-powered RGBW LED technology. Includes charger and remote control for switching colors and charger. Available only in matte ice white finish.

## RGBW LED DMX BATTERY

Ref. 55021DY



ice

Unit with internal lighting with RGBW LED technology and remote control unit for

# VONDOM

switching colors. Also controlled by DMX-1024 (wireless), enabling communication between one or more products simultaneously via the DMX transmitter (not included). There are two options to choose from: Professional XLR DMX and Home WIFI DMX. (Remote control included).

## Ambients

---

