

Blow planter 40x40x40

by Stefano Giovannoni

Blow Collection, designed by **Stefano Giovannoni** for **Vondom**, comes from the motivation to create a **fresh line of indoor-outdoor design furniture** that resonate with the **Pillow family** yet differ in style.

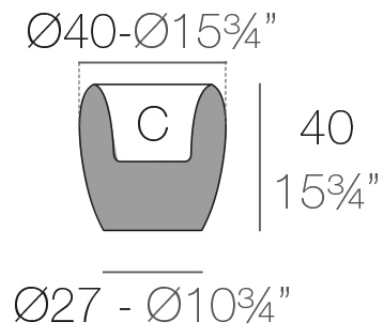


Info

Description

Pots made of polyethylene resin by rotational moulding. 100% Recyclable. Item suitable for indoor and outdoor use. Available in different finishes.

Weight: 3.5 Kg



BLOW Macetero 40 C = 10 L
BLOW Planter 40 C = 2 $\frac{3}{4}$ gal

Finishes

finishes

BASIC

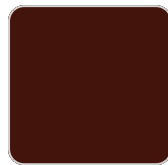
Ref. 55017A



notte blue



crema



purjai red



orange



white



black



bronze



steel



anthracite



red



khaki



taupe



ecru



beige



ice



green

Matt Polyethylene

SELF-WATERING

Ref. 55017R

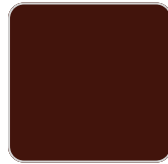
VONDOM



notte blue



crema



purjai red



orange



white



black



bronze



steel



anthracite



red



khaki



taupe



ecru



beige



ice



green

Self-watering system included in all planters except those with basic finish

LACQUERED

Ref. 55017F



notte blue



crema



modo green



purjai red



orange



white



black



bronze



steel



anthracite

VONDOM



champany



red



khaki



taupe



ecru



beige

Lacquered Polyethylene

lighting

WHITE LED
Ref. 55017W



ice

White internally lit unit with LED technology. Available only in matte ice white finish.

RGBW LED
Ref. 55017L



ice

Unit with internal lighting with RGBW LED technology and remote control unit for switching colors. Available only in matte ice white finish. Remote control included.

VONDOM

RGBW LED DMX
Ref. 55017D



ice

Unit with internal lighting with RGBW LED technology and remote control unit for switching colors. Also controlled by DMX-1024 (wireless), enabling communication between one or more products simultaneously via the DMX transmitter (not included). There are two options to choose from: Professional XLR DMX and Home WIFI DMX. (Remote control included).
Optional battery

RGBW LED BATTERY
Ref. 55017Y



ice

Unit with internal lighting with battery-powered RGBW LED technology. Includes charger and remote control for switching colors and charger. Available only in matte ice white finish.

RGBW LED DMX BATTERY
Ref. 55017DY



ice

Unit with internal lighting with RGBW LED technology and remote control unit for

VONDOM

switching colors. Also controlled by DMX-1024 (wireless), enabling communication between one or more products simultaneously via the DMX transmitter (not included). There are two options to choose from: Professional XLR DMX and Home WIFI DMX. (Remote control included).

Ambients

