

Stone planter 60x46x70

by Stefano Giovannoni & Elisa Gargan

Stone designer outdoor furniture collection, designed by Stefano Giovannoni, impresses with its organic shapes, as if they were naturally formed, hence the name. This collection creates a perfect synergy between natural and artificial landscapes. The stones blend seamlessly into any environment, exuding a unique elegance through their material and shape.

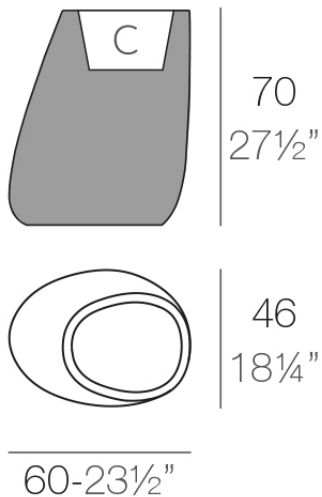


Info

Description

Pot made of polyethylene resin by rotational moulding. 100% Recyclable. Item suitable for indoor and outdoor use. Available in different finishes.

Weight: 8 Kg



STONE Macetero 70

STONE Planter 70

C = 20 L 9 x 23 cm

C = 5 1/2 gal 9 x 10 1/2"

Finishes

finishes

BASIC

Ref. 55009A



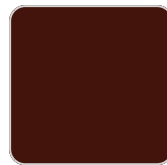
notte blue



orange



crema



purjai red



white



black



bronze



steel



anthracite



red



khaki



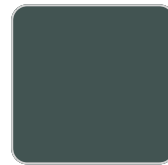
taupe



ecru



beige



green



ice

Matt Polyethylene

SELF-WATERING

Ref. 55009R

VONDOM



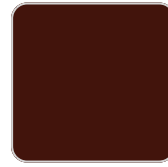
notte blue



orange



crema



purjai red



white



black



bronze



steel



anthracite



red



khaki



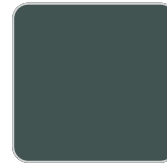
taupe



ecru



beige



green



ice

Self-watering system included in all planters except those with basic finish

LACQUERED

Ref. 55009F



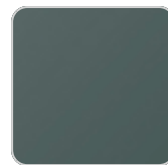
notte blue



orange



crema



modo green



purjai red



white



black



bronze



steel



anthracite

VONDOM



champagne



red



khaki



taupe



ecru



beige

Lacquered Polyethylene

lighting

WHITE LED
Ref. 55009W



ice

White internally lit unit with LED technology. Available only in matte ice white finish.

RGBW LED
Ref. 55009L



ice

Unit with internal lighting with RGBW LED technology and remote control unit for switching colors. Available only in matte ice white finish. Remote control included.

VONDOM

RGBW LED DMX
Ref. 55009D



ice

Unit with internal lighting with RGBW LED technology and remote control unit for switching colors. Also controlled by DMX-1024 (wireless), enabling communication between one or more products simultaneously via the DMX transmitter (not included). There are two options to choose from: Professional XLR DMX and Home WIFI DMX. (Remote control included).
Optional battery

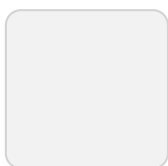
RGBW LED BATTERY
Ref. 55009Y



ice

Unit with internal lighting with battery-powered RGBW LED technology. Includes charger and remote control for switching colors and charger. Available only in matte ice white finish.

RGBW LED DMX BATTERY
Ref. 55009DY



ice

Unit with internal lighting with RGBW LED technology and remote control unit for

VONDOM

switching colors. Also controlled by DMX-1024 (wireless), enabling communication between one or more products simultaneously via the DMX transmitter (not included). There are two options to choose from: Professional XLR DMX and Home WIFI DMX. (Remote control included).

Ambients

