

The factory dining table 250x120

by Ramón Esteve

The Factory collection, designed by Ramón Esteve for Vondom, epitomizes the intersection of cutting-edge design and enduring functionality. Ramón Esteve's meticulous attention to detail is evident in the aluminum profiles and the “deployé” weave technique, setting a new standard for luxury outdoor furniture.

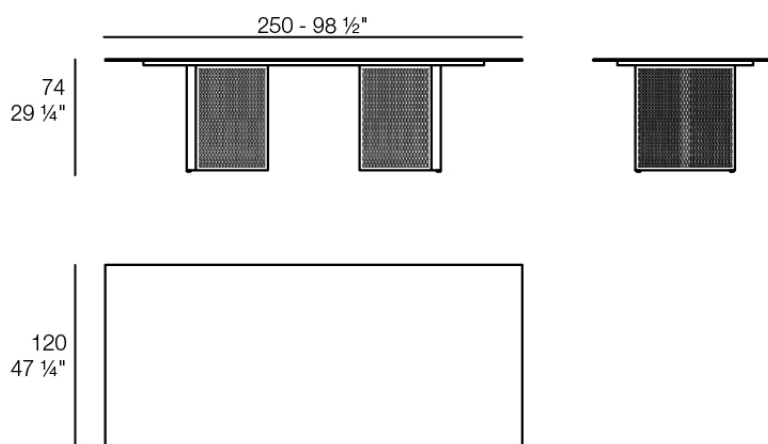
This collection includes a modular sofa, armchair, lounger, side table, lamp, coffee table, high table, chairs and room divider, each piece crafted in Europe to enhance outdoor spaces with elegance and comfort.



Info

Description

Weight: 68 Kg



THE FACTORY Mesa Comedor 250x120
THE FACTORY Dining Table 98 1/2"x 47 1/4"

Finishes

finishes

ALUMINIUM

Ref. 54627



white



smoked



ecru



tortora



cream



garnet



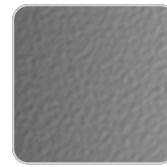
brown



green



blue



gray



anthracite



black

Lacquered aluminium profile.

tabletops

HPL

Ref. VVAR03691



VONDOM

white(black edge)

ecru(black edge)

black(black edge)

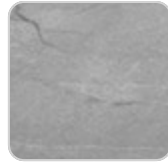
HPL black edge

Solid Core

Ref. VVAR03691B



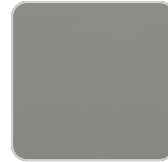
black stone



gray stone



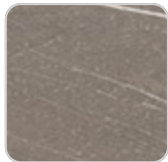
white stone



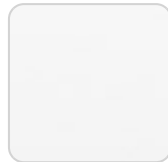
smoked



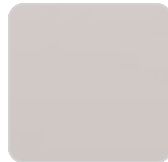
ecru stone



tortora stone



white (white edge)



ecru



tortora



cream



garnet



brown



green



blue



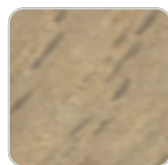
anthracite

Solid Core wood

Ref. VVAR03691B



oak1



oak2

