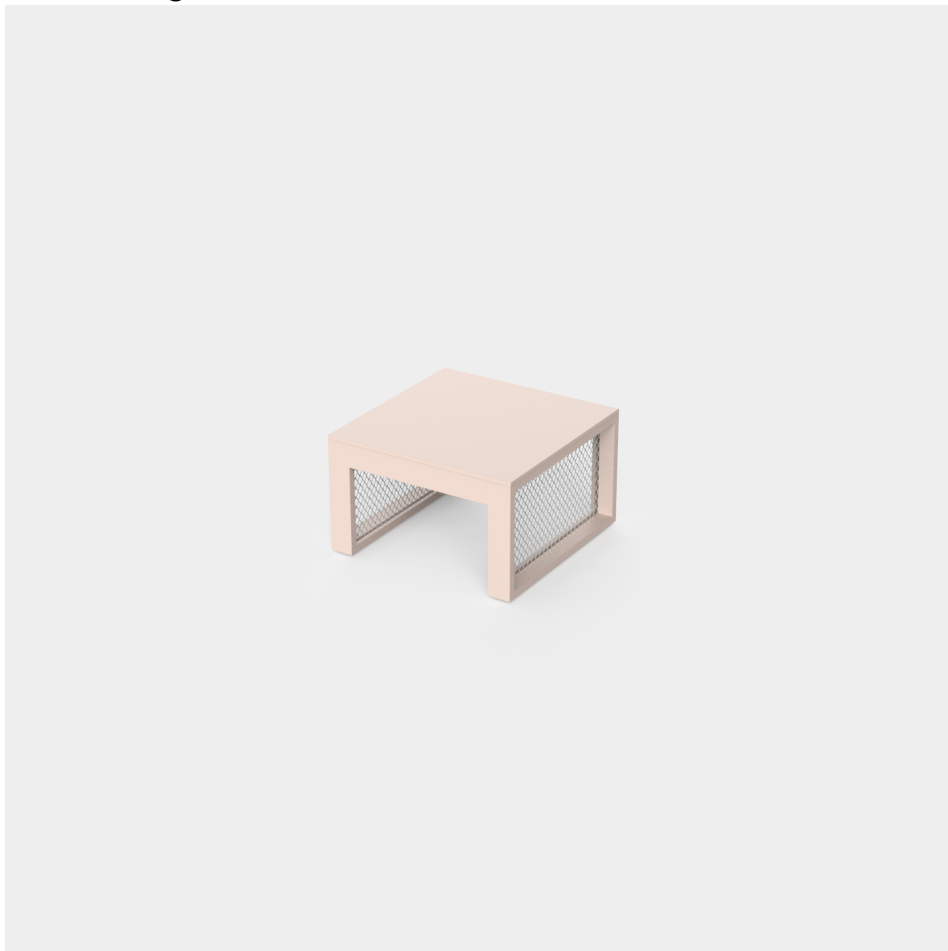


## The factory table sun lounger

by Ramón Esteve

The Factory collection, designed by Ramón Esteve for Vondom, epitomizes the intersection of cutting-edge design and enduring functionality. Ramón Esteve's meticulous attention to detail is evident in the aluminum profiles and the "deployé" weave technique, setting a new standard for luxury outdoor furniture.

This collection includes a modular sofa, armchair, lounger, side table, lamp, coffee table, high table, chairs and room divider, each piece crafted in Europe to enhance outdoor spaces with elegance and comfort.



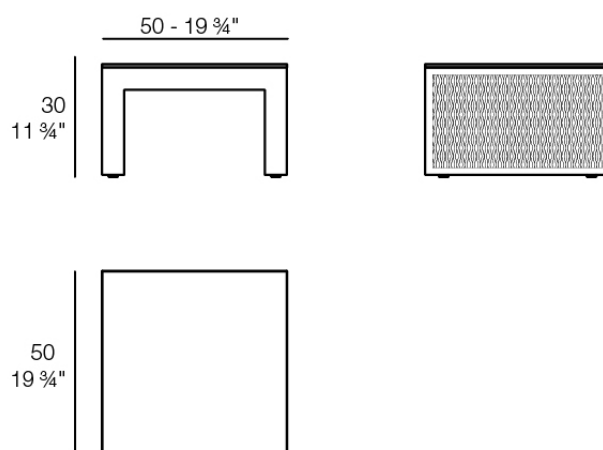
## Info

---

### Description

Composing of an aluminum profile and deployed mesh, all materials and components are resistant to extreme weather conditions. Available in different finishes.

Weight: 5.74 Kg



THE FACTORY Mesa Tumbona  
THE FACTORY Table Sun Lounger

## Finishes

---

### finishes

---

#### ALUMINIUM

Ref. 54623



white



smoked



ecru



tortora



cream



garnet



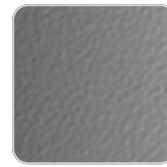
brown



green



blue



gray



anthracite



black

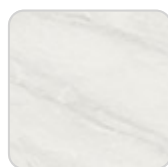
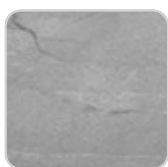
Lacquered aluminium profile.

### tabletops

---

#### Solid Core

Ref. 54623TBL



# VONDOM

gray stone



black stone

white stone



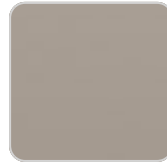
white (white edge)

smoked



ecru

ecru stone



tortora

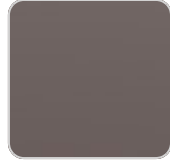
tortora stone



cream



garnet



brown



green



blue



anthracite

# VONDOM

## Ambients

---



