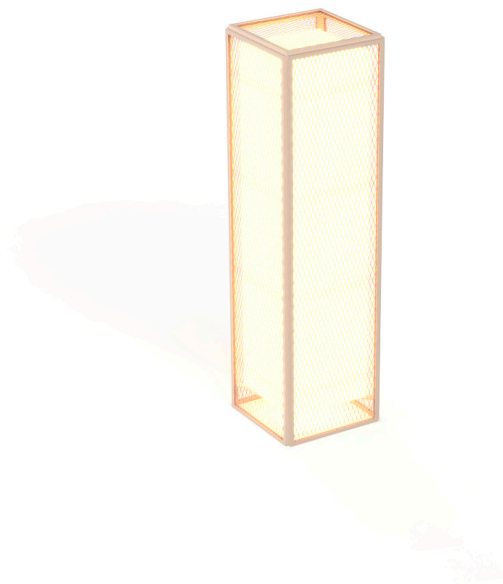


## The factory lamp I

by Ramón Esteve

The Factory collection, designed by Ramón Esteve for Vondom, epitomizes the intersection of cutting-edge design and enduring functionality. Ramón Esteve's meticulous attention to detail is evident in the aluminum profiles and the "deployé" weave technique, setting a new standard for luxury outdoor furniture.

This collection includes a modular sofa, armchair, lounger, side table, lamp, coffee table, high table, chairs and room divider, each piece crafted in Europe to enhance outdoor spaces with elegance and comfort.

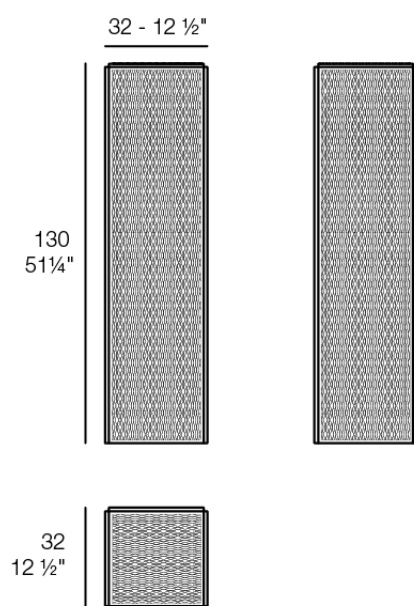


## Info

---

### Description

Weight: 11.69 Kg



THE FACTORY Lámpara 31x31x120  
THE FACTORY Puff S 12¼ x 12¼ x 51¼"

## Finishes

---

### finishes

---

#### ALUMINIUM

Ref. 54621



white



smoked



ecru



tortora



cream



garnet



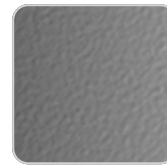
brown



green



blue



gray



anthracite



black

Lacquered aluminium profile.

### lighting

---

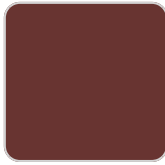
#### WHITE LED

Ref. 54621W



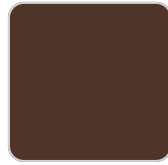
# VONDOM

white



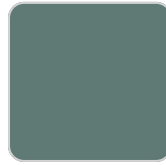
garnet

smoked



brown

ecru



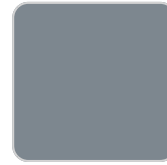
green

tortora



blue

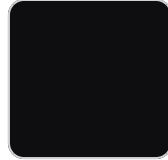
cream



gray



anthracite



black

White internally lit unit with LED technology. Available only in matte ice white finish.

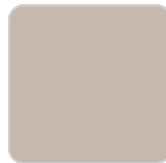
## RGBW LED Ref. 54621L



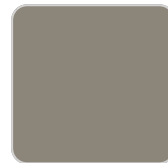
white



smoked



ecru



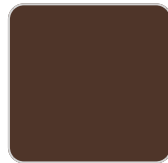
tortora



cream



garnet



brown



green



blue



gray



anthracite



black

Unit with internal lighting with RGBW LED technology and remote control unit for switching colors. Available only in matte ice white finish. Remote control included.

## RGBW LED DMX

# VONDOM

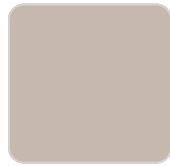
Ref. 54621D



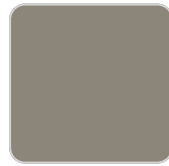
white



smoked



ecru



tortora



cream



garnet



brown



green



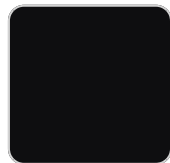
blue



gray



anthracite



black

Unit with internal lighting with RGBW LED technology and remote control unit for switching colors. Also controlled by DMX-1024 (wireless), enabling communication between one or more products simultaneously via the DMX transmitter (not included). There are two options to choose from: Professional XLR DMX and Home WIFI DMX. (Remote control included).

Optional battery

## RGBW LED BATTERY

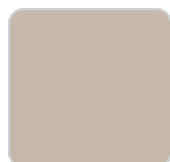
Ref. 54621Y



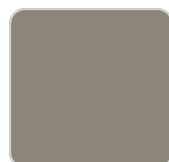
white



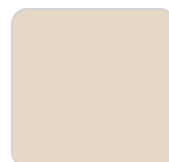
smoked



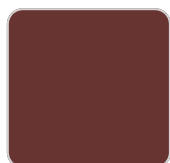
ecru



tortora



cream



garnet



brown



green

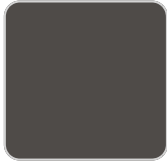


blue



gray

# VONDOM



anthracite



black

Unit with internal lighting with battery-powered RGBW LED technology. Includes charger and remote control for switching colors and charger. Available only in matte ice white finish.

## RGBW LED DMX BATTERY

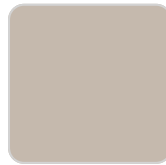
Ref. 54621DY



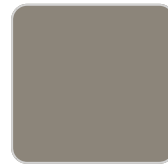
white



smoked



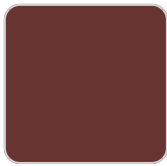
ecru



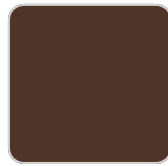
tortora



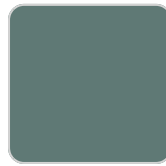
cream



garnet



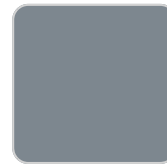
brown



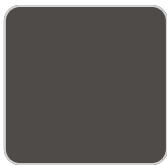
green



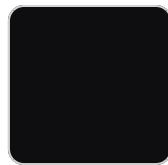
blue



gray



anthracite



black

Unit with internal lighting with RGBW LED technology and remote control unit for switching colors. Also controlled by DMX-1024 (wireless), enabling communication between one or more products simultaneously via the DMX transmitter (not included). There are two options to choose from: Professional XLR DMX and Home WIFI DMX. (Remote control included).

## Ambients

---

