

## The factory dining table 300x120

by Ramón Esteve

The Factory collection, designed by Ramón Esteve for Vondom, epitomizes the intersection of cutting-edge design and enduring functionality. Ramón Esteve's meticulous attention to detail is evident in the aluminum profiles and the “deployé” weave technique, setting a new standard for luxury outdoor furniture.

This collection includes a modular sofa, armchair, lounger, side table, lamp, coffee table, high table, chairs and room divider, each piece crafted in Europe to enhance outdoor spaces with elegance and comfort.

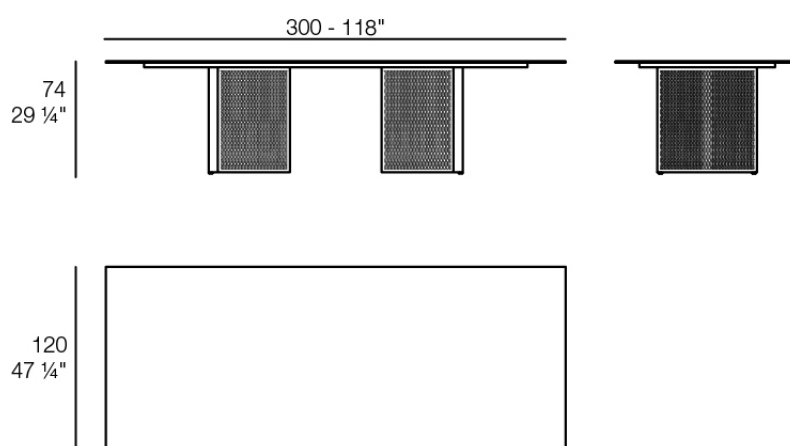


## Info

---

### Description

Weight: 75 Kg



THE FACTORY Mesa Comedor 300x120  
THE FACTORY Dining Table 118"x 47 1/4"

## Finishes

---

### finishes

---

#### ALUMINIUM

Ref. 54619



white



smoked



ecru



tortora



cream



garnet



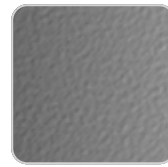
brown



green



blue



gray



anthracite



black

Lacquered aluminium profile.

### tabletops

---

#### HPL

Ref. VVAR03381



# VONDOM

white(black edge)

ecru(black edge)

black(black edge)

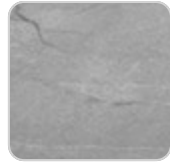
HPL black edge

Solid Core

Ref. VVAR03382



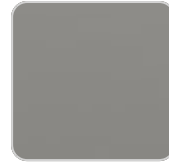
black stone



gray stone



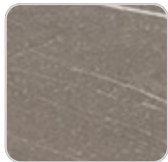
white stone



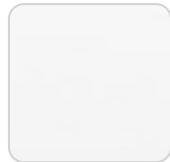
smoked



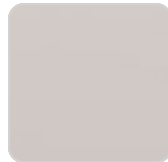
ecru stone



tortora stone



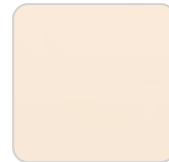
white (white edge)



ecru



tortora



cream



garnet



brown



green



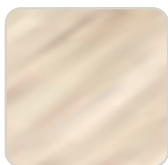
blue



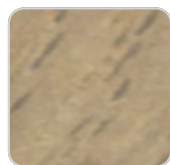
anthracite

Solid Core wood

Ref. VVAR03382



oak1



oak2

