

## The factory dining table 200x120

by Ramón Esteve

The Factory collection, designed by Ramón Esteve for Vondom, epitomizes the intersection of cutting-edge design and enduring functionality. Ramón Esteve's meticulous attention to detail is evident in the aluminum profiles and the "deployé" weave technique, setting a new standard for luxury outdoor furniture.

This collection includes a modular sofa, armchair, lounger, side table, lamp, coffee table, high table, chairs and room divider, each piece crafted in Europe to enhance outdoor spaces with elegance and comfort.

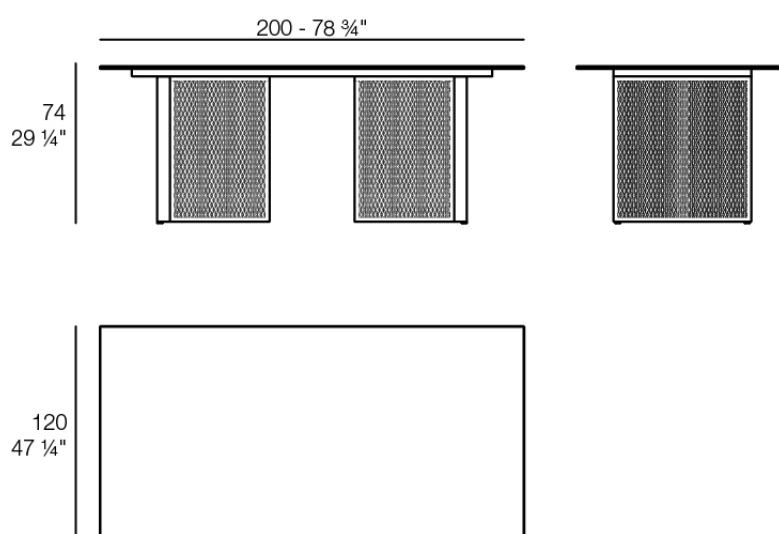


## Info

---

### Description

Weight: 56.8 Kg



THE FACTORY Mesa Comedor 200x120  
THE FACTORY Dining Table 78 3/4"x 47 1/4"

## Finishes

---

### finishes

---

#### ALUMINIUM

Ref. 54617



white



smoked



ecru



tortora



cream



garnet



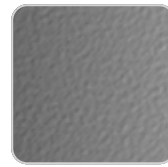
brown



green



blue



gray



anthracite



black

Lacquered aluminium profile.

### tabletops

---

#### HPL

Ref. VVAR03682



# VONDOM

white(black edge)

ecru(black edge)

black(black edge)

HPL black edge

## Ambients

---

