

The factory lamp s

by Ramón Esteve

The Factory collection, designed by Ramón Esteve for Vondom, epitomizes the intersection of cutting-edge design and enduring functionality. Ramón Esteve's meticulous attention to detail is evident in the aluminum profiles and the "deployé" weave technique, setting a new standard for luxury outdoor furniture.

This collection includes a modular sofa, armchair, lounger, side table, lamp, coffee table, high table, chairs and room divider, each piece crafted in Europe to enhance outdoor spaces with elegance and comfort.

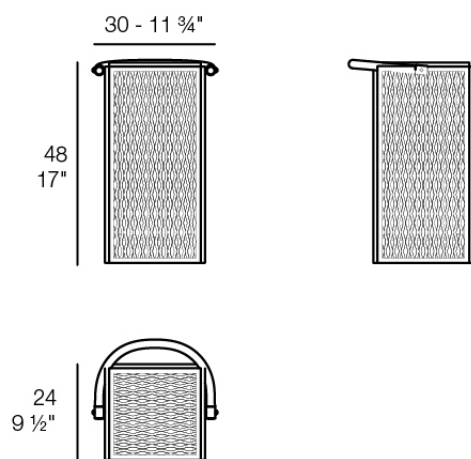


Info

Description

Designer lamp. The deployed mesh is made from aluminum, and the inner lighting is made out of polyethylene resin manufactured by rotational molding. Suitable for an interior and an outdoor use. Available in various finishes.

Weight: 3.99 Kg



THE FACTORY Lámpara 30 x 24 x 48
THE FACTORY Puff S 11 3/4 x 9 1/2 x 19"

Finishes

lighting

RGBW LED BATTERY

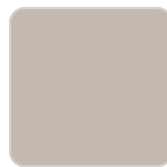
Ref. 54612Y



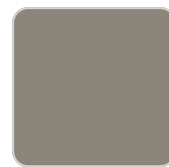
white



smoked



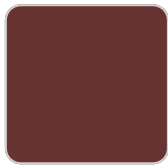
ecru



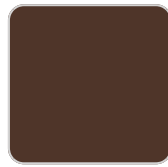
tortora



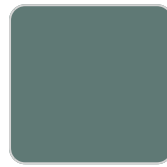
cream



garnet



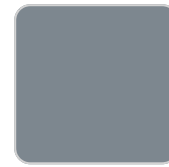
brown



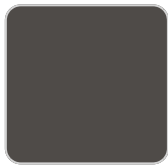
green



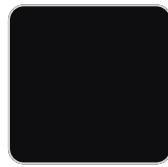
blue



gray



anthracite



black

Unit with internal lighting with battery-powered RGBW LED technology. Includes charger and remote control for switching colors and charger. Available only in matte ice white finish.

RGBW LED DMX BATTERY

Ref. 54612DY



white



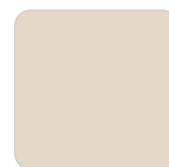
smoked



ecru



tortora



cream

VONDOM



garnet



brown



green



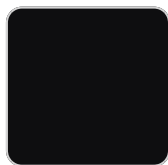
blue



gray



anthracite



black

Unit with internal lighting with RGBW LED technology and remote control unit for switching colors. Also controlled by DMX-1024 (wireless), enabling communication between one or more products simultaneously via the DMX transmitter (not included). There are two options to choose from: Professional XLR DMX and Home WIFI DMX. (Remote control included).

Ambients

