

The factory area divider 120x150

by Ramón Esteve

The Factory collection, designed by Ramón Esteve for Vondom, epitomizes the intersection of cutting-edge design and enduring functionality. Ramón Esteve's meticulous attention to detail is evident in the aluminum profiles and the "deployé" weave technique, setting a new standard for luxury outdoor furniture.

This collection includes a modular sofa, armchair, lounger, side table, lamp, coffee table, high table, chairs and room divider, each piece crafted in Europe to enhance outdoor spaces with elegance and comfort.

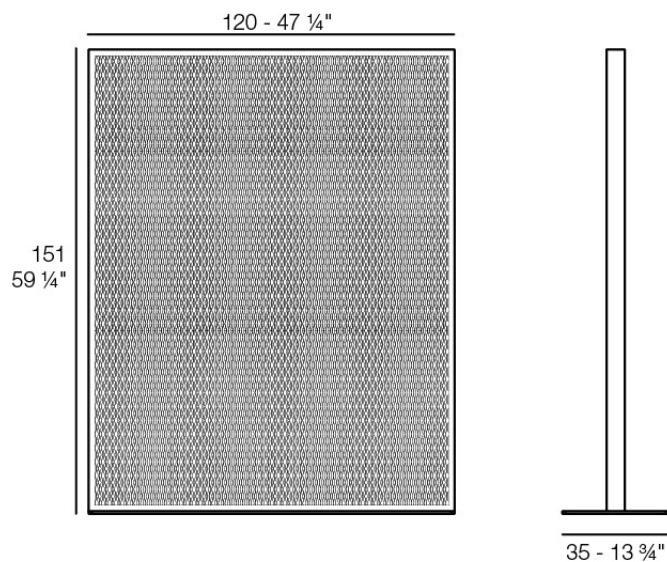


Info

Description

Space divider made with an aluminum profile and deployed mesh, all materials and components are resistant to extreme weather conditions. Available in different finishes.

Weight: 30.06 Kg



THE FACTORY Separador de Ambientes 120x150
THE FACTORY Room Divider 47 1/4"x 59 1/4"

Finishes

finishes

ALUMINIUM

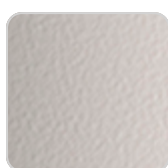
Ref. 54611



white



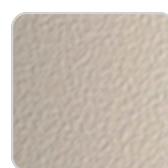
smoked



ecru



tortora



cream



garnet



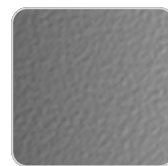
brown



green



blue



gray



anthracite



black

Lacquered aluminium profile.

Ambients

