

Vineyard planter wheel

by Ramón Esteve

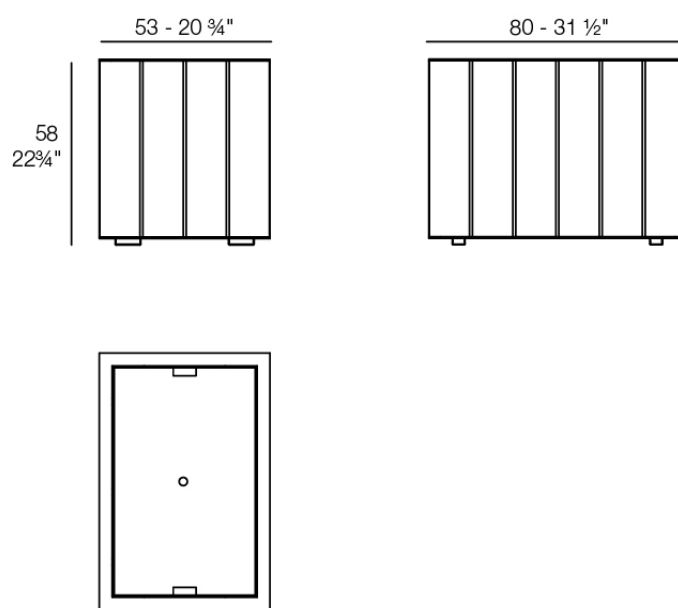
Vineyard Collection, by Ramon Esteve, is an aluminum and wooden modern outdoor furniture collection with a rustic and warm style.



Info

Description

Weight: 43.7 Kg

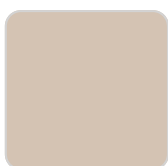


Versión con patas
Leg version

Finishes

finishes

ALUMINIUM
Ref. 54508SU



crema



castoro fiber



cacao

panel/top

Teak
Ref. 54508AA



natural teak



weathered teak

Ambients

