

Vineyard chair

by Ramón Esteve

Designed by Ramón Esteve, the Vineyard collection is a testament to the excellence of wooden modern outdoor furniture crafted with a harmonious fusion of aluminum and wood. This collection not only embodies a modern aesthetic, but also exudes a rustic warmth that blends effortlessly into a variety of outdoor spaces.

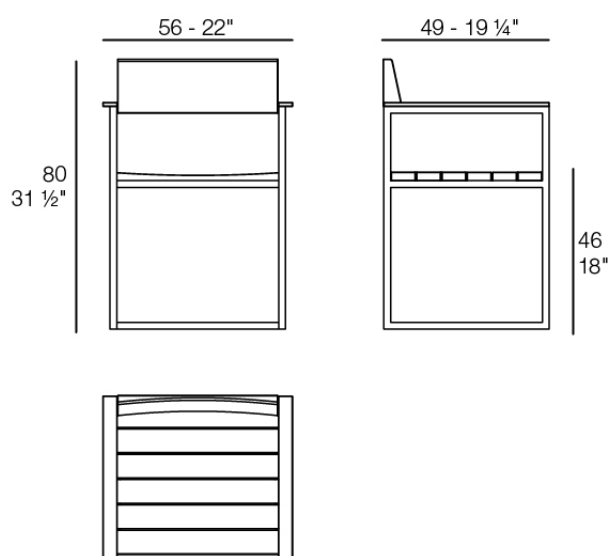
Each piece in the Vineyard collection exemplifies Ramón Esteve's signature craftsmanship and meticulous attention to detail, ensuring both style and durability in outdoor furnishings. Ideal for those who appreciate quality and sophistication, this collection offers a perfect blend of form and function.



Info

Description

Weight: 7.47 Kg



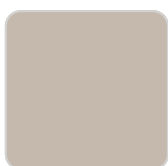
VINEYARD Silla
VINEYARD Chair

Finishes

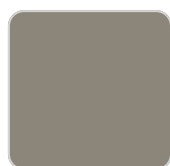
finishes

ALUMINIUM

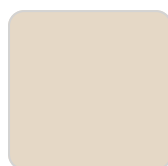
Ref. 54506E



ecru



tortora



cream

panel/top

Teak

Ref. 54506AA



natural teak



weathered teak

Ambients

