

Vineyard dining table wheel

by Ramón Esteve

Designed by Ramón Esteve, the Vineyard collection is a testament to the excellence of wooden modern outdoor furniture crafted with a harmonious fusion of aluminum and wood. This collection not only embodies a modern aesthetic, but also exudes a rustic warmth that blends effortlessly into a variety of outdoor spaces.

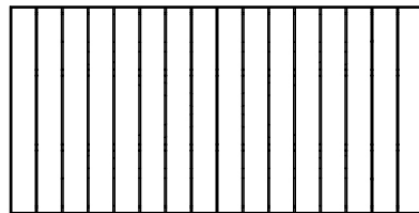
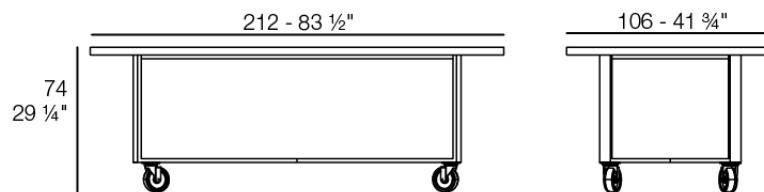
Each piece in the Vineyard collection exemplifies Ramón Esteve's signature craftsmanship and meticulous attention to detail, ensuring both style and durability in outdoor furnishings. Ideal for those who appreciate quality and sophistication, this collection offers a perfect blend of form and function.



Info

Description

Weight: 32 Kg



VINEYARD Mesa Comedor
VINEYARD Dining Table

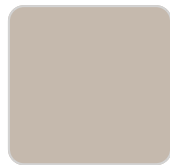
Finishes

finishes

ALUMINIUM
Ref. 54505ZSU



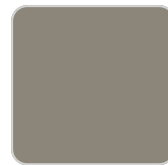
white



ecru



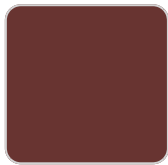
smoked



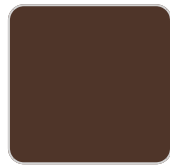
tortora



cream



garnet



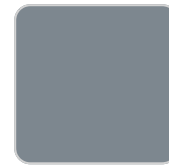
brown



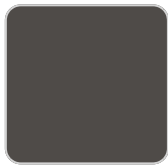
green



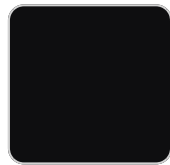
blue



gray



anthracite



black

panel/top

Solid Core
Ref. 54505AA



ecru stone



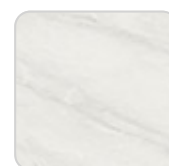
tortora stone



black stone

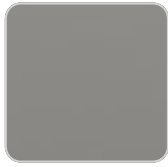


gray stone



white stone

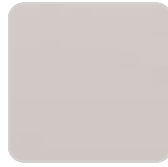
VONDOM



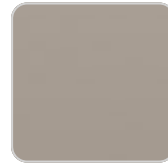
smoked



white (white edge)



ecru



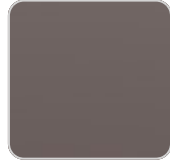
tortora



cream



garnet



brown



green



blue



anthracite

Solid Core wood

Ref. 54505AA



oak1



oak2

Teak

Ref. 54505AA



natural teak



weathered teak

Ambients

