

Vineyard extra-large coffee table legs

by Ramón Esteve

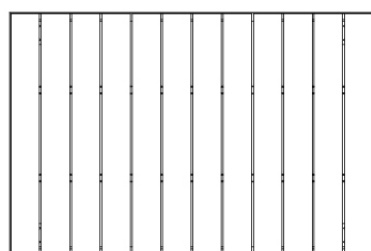
Vineyard Collection, by Ramon Esteve, is an aluminum and wooden modern outdoor furniture collection with a rustic and warm style.



Info

Description

Weight: 60 Kg

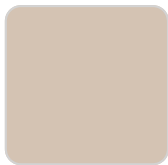


Versión con patas
Leg version

Finishes

finishes

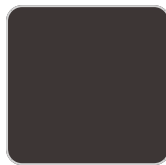
ALUMINIUM
Ref. 54504ZSU



crema



castoro fiber



cacao

panel/top

Solid Core
Ref. 54504AA



purjai red



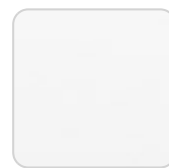
gioia bianco



notte blue



british gray



white (white edge)



traffic gray



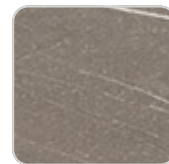
crema



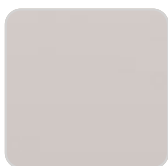
yule brown



castoro fiber



pulpis gray



piombo gray



kandia black



cacao



yule gray



modo green

VONDOM

Solid Core wood
Ref. 54504AA



oak1



oak2

Teak
Ref. 54504AA



natural teak



weathered teak

Ambients

