

Vineyard extra-large coffee table legs

by Ramón Esteve

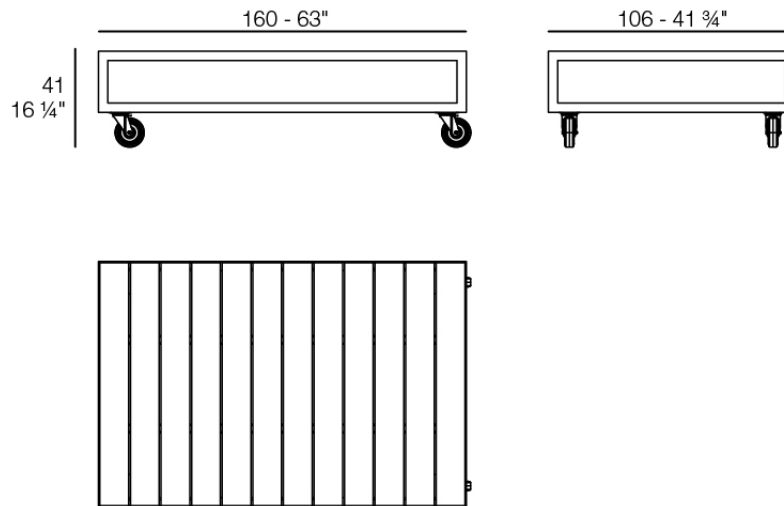
Vineyard Collection, by Ramon Esteve, is an aluminum and wooden modern outdoor furniture collection with a rustic and warm style.



Info

Description

Weight: 60 Kg

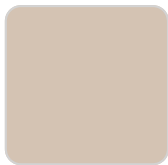


VINEYARD Mesa XL
VINEYARD Table XL

Finishes

finishes

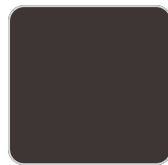
ALUMINIUM
Ref. 54504ZSU



crema



castoro fiber



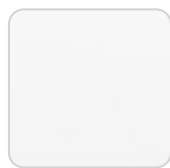
cacao

panel/top

Solid Core
Ref. 54504AA



traffic gray



white (white edge)



crema



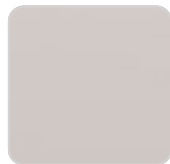
yule brown



castoro fiber



pulpis gray



piombo gray



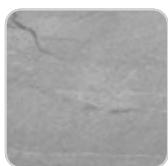
kandia black



cacao



modo green



yule gray



purjai red



gioia bianco



notte blue



british gray

VONDOM

Solid Core wood

Ref. 54504AA



oak1



oak2

Teak

Ref. 54504AA



natural teak



weathered teak

Ambients

