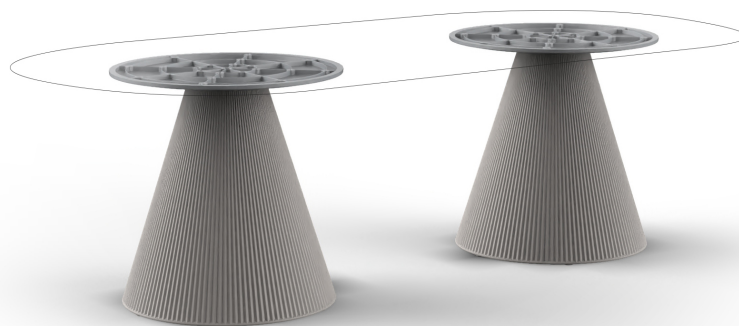


Gatsby doble_base ø65x73cm s70

by Ramón Esteve

The Gatsby collection, elegantly designed by Ramón Esteve for Vondom, embodies the essence of Art Deco-inspired outdoor living. Influenced by the lavish parties and opulent lifestyle of the Roaring Twenties, this collection embodies a blend of modernity and timeless sophistication.

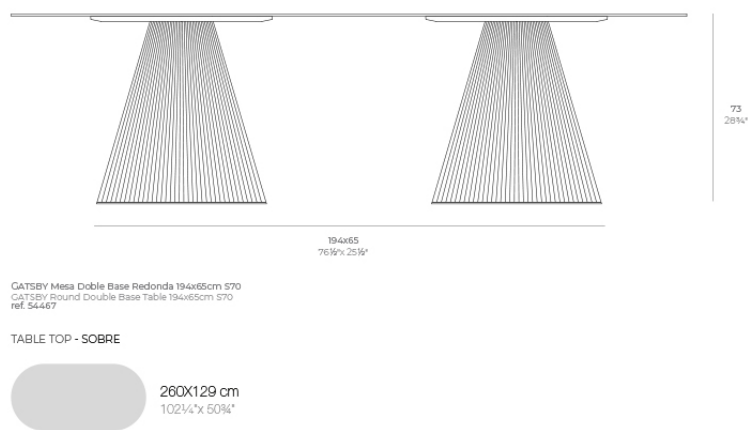
“Something new, extraordinary, beautiful, simple but sophisticatedly designed” said Francis Scott Fitzgerald of his goals for the novel he was about to write, *The Great Gatsby* was born in a time of prosperity, parties and excess. It was called “The American Dream”.



Info

Description

Weight: 16 Kg



Finishes

finishes

BASIC

Ref. 54467



white 2001



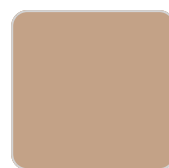
ecru 2003



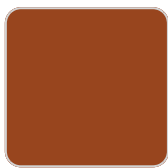
tortora 2004



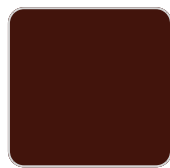
cream 2017



camel 2020



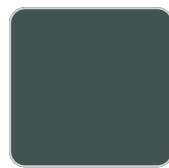
clay 2022



garnet 2015



brown 2008



green 2016



blue 2018



gray 2005



anthracite 2006



black 2002



ecru granite



cream granite



ice 2101

Matt Polyethylene

Ambients



