

## Gatsby sun lounger

by Ramón Esteve

The Gatsby collection, elegantly designed by Ramón Esteve for Vondom, embodies the essence of Art Deco-inspired outdoor living. Influenced by the lavish parties and opulent lifestyle of the Roaring Twenties, this collection embodies a blend of modernity and timeless sophistication.

“Something new, extraordinary, beautiful, simple but sophisticatedly designed” said Francis Scott Fitzgerald of his goals for the novel he was about to write, *The Great Gatsby* was born in a time of prosperity, parties and excess. It was called “The American Dream”.

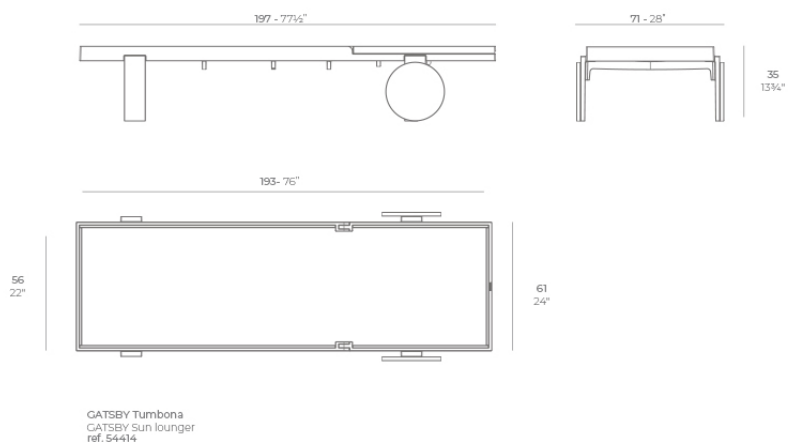


## Info

---

### Description

Weight: 18.89 Kg



## Finishes

---

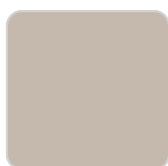
### finishes

---

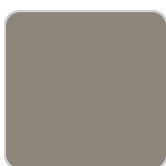
BASIC PP  
Ref. 54414



white



ecru



tortora

Available in various colors

## Ambients

---

