

Frame aluminium table 250x100x74

by Ramón Esteve

Frame, outdoor collection by Ramon Esteve, using elementary geometry as a framework, serene and timeless shapes were generated through a process of exploration. The endless possibilities offered by advanced technology and materials served as the inspiration to push boundaries and discover limitless possibilities.

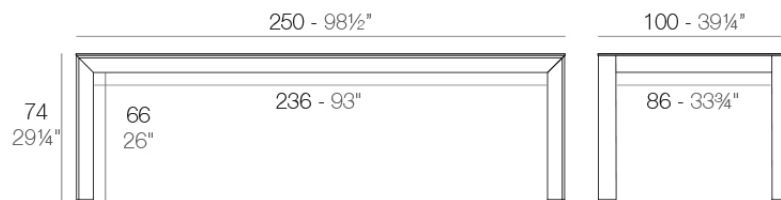


Info

Description

Extruded aluminum with cast lacquered aluminum base. HPL Table top ó Dekton Table top. Item suitable for indoor and outdoor use. HPL Table top.

Weight: 52.88 Kg



FRAME Mesa 250x100cm
FRAME Dinning Table 98 1/2"x39 1/4"

Finishes

finishes

ALUMINIUM
Ref. 54247FB



white



british gray



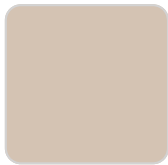
traffic gray



black



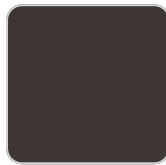
ecru



crema



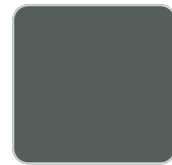
castoro fiber



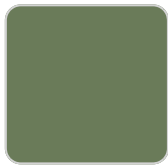
cacao



notte blue



modo green



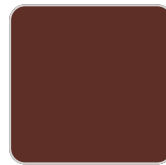
pickle



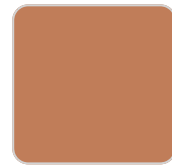
almond



red



purjai red



melon



mostaza

Lacquered aluminium profile.

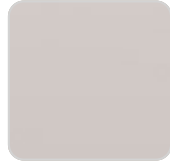
tabletops

HPL
Ref. VVAR02793

VONDOM



black(black edge)



ecru(black edge)

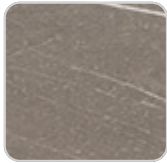


white(black edge)

HPL black edge

Solid Core

Ref. VVAR02794



pulpis gray



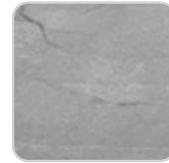
cacao



kandia black



modo green



yule gray



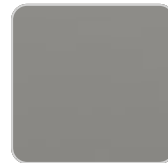
purjai red



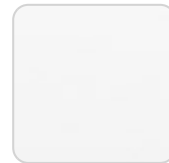
gioia bianco



notte blue



british gray



white (white edge)



traffic gray



crema



castoro fiber



yule brown



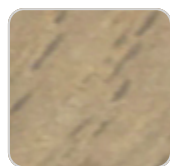
piombo gray

Solid Core wood

Ref. VVAR02794



oak1



oak2

VONDOM