

## Frame aluminium table 100x100x32

by Ramón Esteve

Frame, outdoor collection by Ramon Esteve, using elementary geometry as a framework, serene and timeless shapes were generated through a process of exploration. The endless possibilities offered by advanced technology and materials served as the inspiration to push boundaries and discover limitless possibilities.



## Info

---

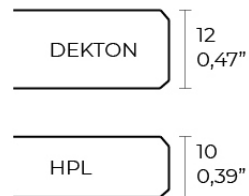
### Description

Extruded aluminum with cast lacquered aluminum base. HPL Table top ó Dekton Table top. Item suitable for indoor and outdoor use. HPL Table top.

Weight: 20.95 Kg



FRAME Mesa Baja Aluminio 100 x 100 cm  
FRAME Low Table Aluminium 39 1/4" x 39 1/4"



## Finishes

---

### finishes

---

ALUMINIUM  
Ref. 54245FB



white



smoked



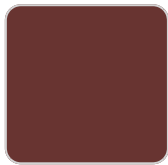
ecru



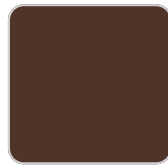
tortora



cream



garnet



brown



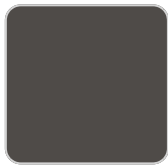
green



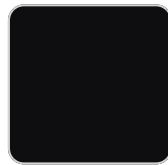
blue



gray



anthracite



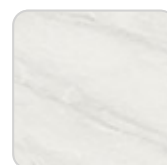
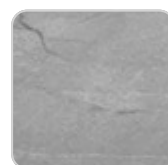
black

Lacquered aluminium profile.

### tabletops

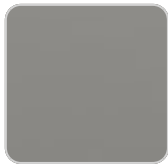
---

Solid Core  
Ref. VVAR02564



# VONDOM

ecru stone



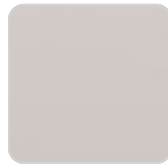
smoked

tortora stone



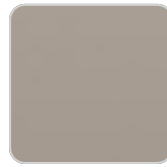
white (white edge)

black stone



ecru

gray stone



tortora

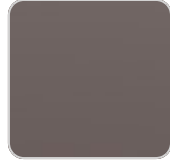
white stone



cream



garnet



brown



green



blue



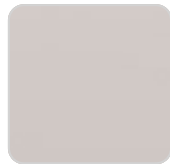
anthracite

## HPL

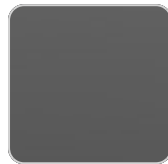
Ref. VVAR02563



white(black edge)



ecru(black edge)



black(black edge)

## HPL black edge

## Dekton

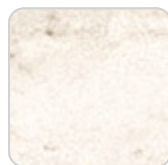
Ref. VVAR02831



kelya



entzo



danae

## Ambients

---

