

Frame aluminium table 200x60x105

by Ramón Esteve

Frame, outdoor collection by Ramon Esteve, using elementary geometry as a framework, serene and timeless shapes were generated through a process of exploration. The endless possibilities offered by advanced technology and materials served as the inspiration to push boundaries and discover limitless possibilities.

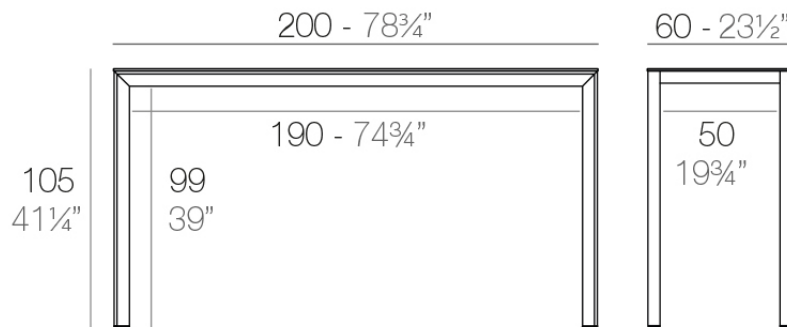


Info

Description

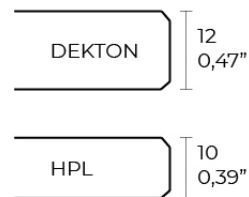
Extruded aluminum with cast lacquered aluminum base. HPL Table top ó Dekton Table top. Item suitable for indoor and outdoor use. HPL Table top.

Weight: 30.15 Kg



FRAME Mesa Alta Aluminio 200 x 60

FRAME Bar Table Aluminio 78¾" x 23½"



Finishes

finishes

ALUMINIUM
Ref. 54244FB



white



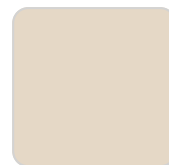
smoked



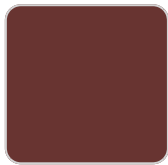
ecru



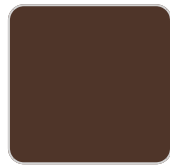
tortora



cream



garnet



brown



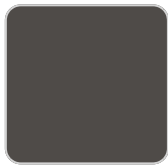
green



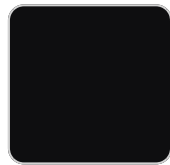
blue



gray



anthracite

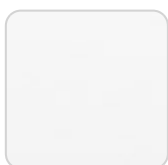


black

Lacquered aluminium profile.

tabletops

HPL
Ref. VVAR02607



VONDOM

white(black edge)

ecru(black edge)

black(black edge)

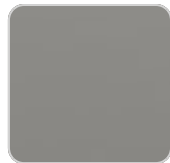
HPL black edge

Solid Core

Ref. VVAR02608



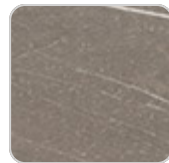
white stone



smoked



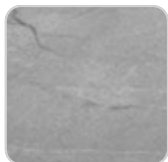
ecru stone



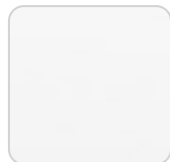
tortora stone



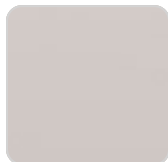
black stone



gray stone



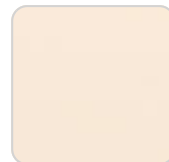
white (white edge)



ecru



tortora



cream



garnet



brown



green



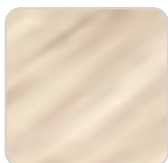
blue



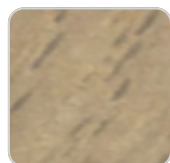
anthracite

Solid Core wood

Ref. VVAR02608



oak1



oak2

Dekton

Ref. VVAR02840

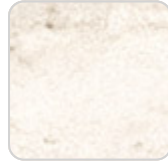
VONDOM



kelya



entzo



danae

Ambients

