

## Frame aluminium table 140x60x105

by Ramón Esteve

Frame, outdoor collection by Ramon Esteve, using elementary geometry as a framework, serene and timeless shapes were generated through a process of exploration. The endless possibilities offered by advanced technology and materials served as the inspiration to push boundaries and discover limitless possibilities.



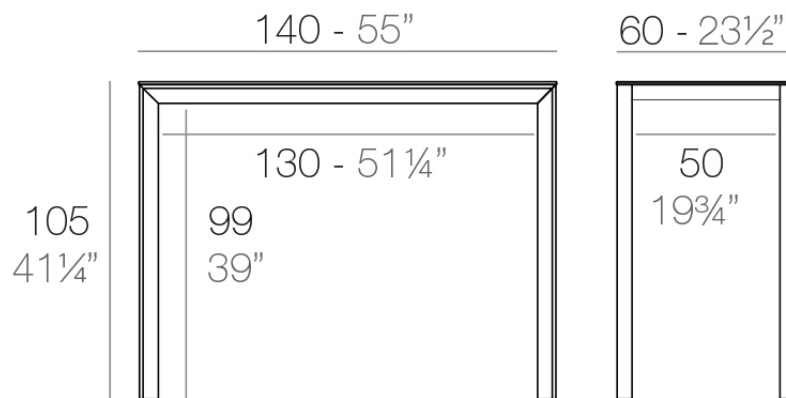
## Info

---

### Description

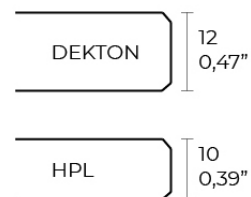
Extruded aluminum with cast lacquered aluminum base. HPL Table top ó Dekton Table top. Item suitable for indoor and outdoor use. HPL Table top.

Weight: 25.58 Kg



FRAME Mesa Alta Aluminio 140 x 60

FRAME Bar Table Aluminium 55" x 23 1/2"



## Finishes

---

### finishes

---

ALUMINIUM  
Ref. 54243FB



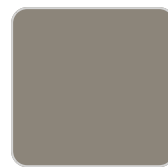
white



smoked



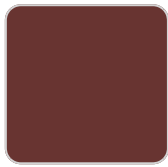
ecru



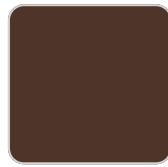
tortora



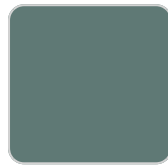
cream



garnet



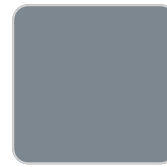
brown



green



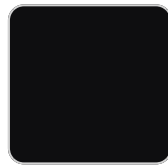
blue



gray



anthracite



black

Lacquered aluminium profile.

### tabletops

---

HPL  
Ref. VVAR02587



# VONDOM

white(black edge)

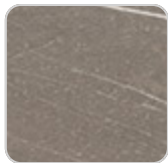
ecru(black edge)

black(black edge)

HPL black edge

Solid Core

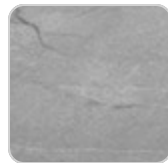
Ref. VVAR02588



tortora stone



black stone



gray stone



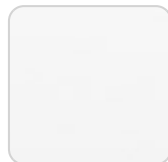
white stone



smoked



ecru stone



white (white edge)



ecru



tortora



cream



garnet



brown



green



blue



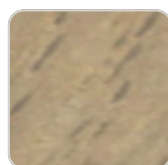
anthracite

Solid Core wood

Ref. VVAR02588



oak1



oak2

Dekton

Ref. VVAR02837



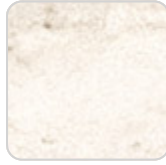
# VONDOM



kelya



entzo



danae

## Ambients

---

