

Frame aluminium table 300x120x74

by Ramón Esteve

Frame, outdoor collection by Ramon Esteve, using elementary geometry as a framework, serene and timeless shapes were generated through a process of exploration. The endless possibilities offered by advanced technology and materials served as the inspiration to push boundaries and discover limitless possibilities.

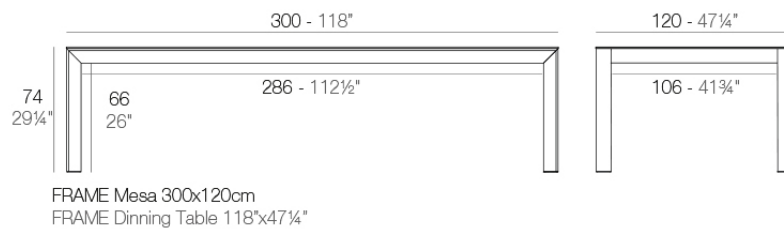


Info

Description

Extruded aluminum with cast lacquered aluminum base. HPL Table top ó Dekton Table top. Item suitable for indoor and outdoor use. HPL Table top.

Weight: 70.7 Kg



Finishes

finishes

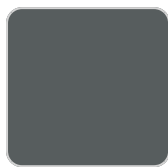
ALUMINIUM
Ref. 54242FB



white



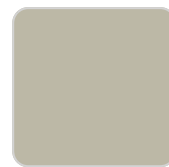
british gray



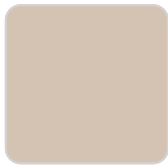
traffic gray



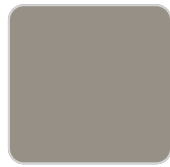
black



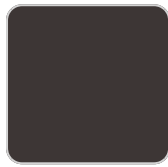
ecru



crema



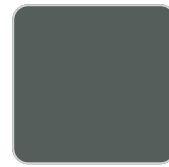
castoro fiber



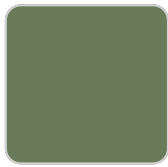
cacao



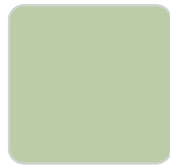
notte blue



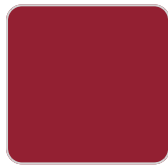
modo green



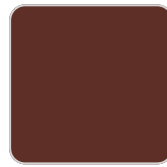
pickle



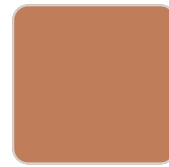
almond



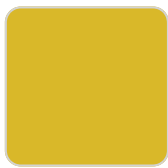
red



purjai red



melon



mostaza

Lacquered aluminium profile.

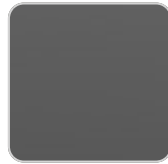
tabletops

HPL
Ref. VVAR02597

VONDOM



white(black edge)



black(black edge)



ecru(black edge)

HPL black edge

Solid Core

Ref. VVAR02598



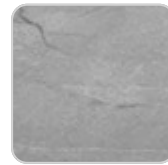
cacao



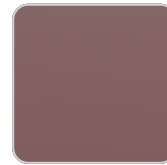
kandia black



modo green



yule gray



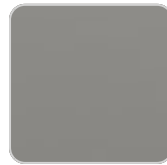
purjai red



gioia bianco



notte blue



british gray



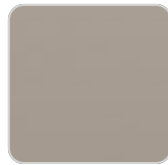
white (white edge)



traffic gray



crema



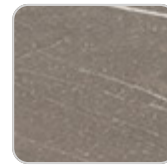
castoro fiber



yule brown



piombo gray



pulpis gray

Solid Core wood

Ref. VVAR02598



oak1



oak2

Ambients

