

Frame aluminium table 200x100x74

by Ramón Esteve

Frame, outdoor collection by Ramon Esteve, using elementary geometry as a framework, serene and timeless shapes were generated through a process of exploration. The endless possibilities offered by advanced technology and materials served as the inspiration to push boundaries and discover limitless possibilities.

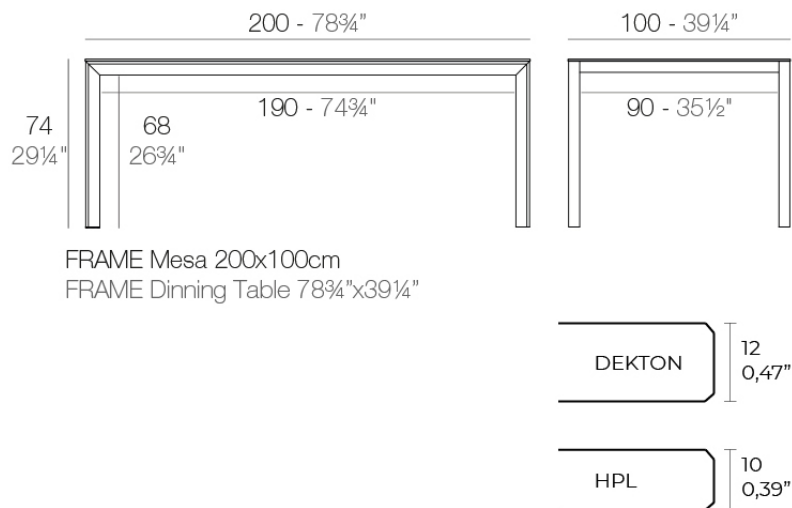


Info

Description

Extruded aluminum with cast lacquered aluminum base. HPL Table top ó Dekton Table top. Item suitable for indoor and outdoor use. HPL Table top.

Weight: 39.15 Kg



Finishes

finishes

ALUMINIUM
Ref. 54241FM



white



british gray



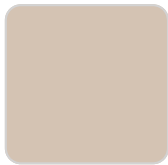
traffic gray



black



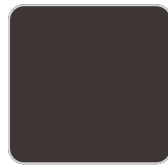
ecru



crema



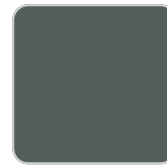
castoro fiber



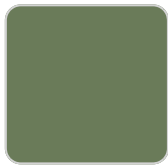
cacao



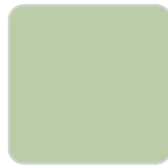
notte blue



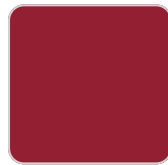
modo green



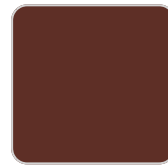
pickle



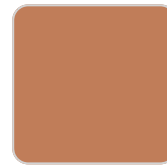
almond



red



purjai red



melon



mostaza

Lacquered aluminium profile.

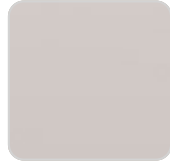
tabletops

HPL
Ref. VVAR02595

VONDOM



black(black edge)



ecru(black edge)



white(black edge)

HPL black edge

Solid Core

Ref. VVAR02596



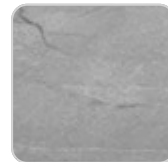
cacao



kandia black



modo green



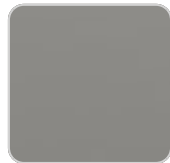
yule gray



gioia bianco



purjai red



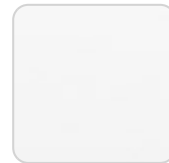
british gray



notte blue



traffic gray



white (white edge)



crema



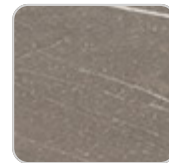
yule brown



castoro fiber



piombo gray



pulpis gray

Dekton

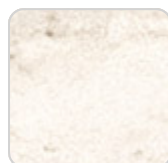
Ref. VVAR02839



kelya



entzo



danae

Ambients

