

Frame aluminium table 200x90x74

by Ramón Esteve

Frame, outdoor collection by Ramon Esteve, using elementary geometry as a framework, serene and timeless shapes were generated through a process of exploration. The endless possibilities offered by advanced technology and materials served as the inspiration to push boundaries and discover limitless possibilities.

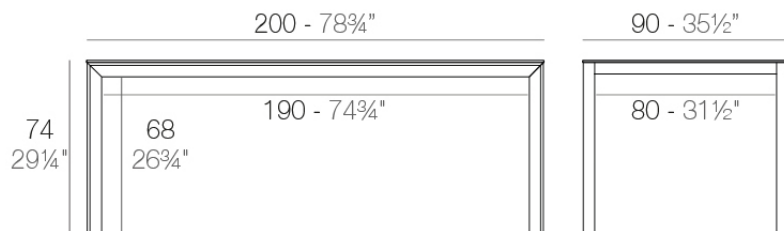


Info

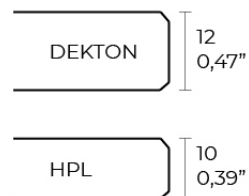
Description

Extruded aluminum with cast lacquered aluminum base. HPL Table top ó Dekton Table top. Item suitable for indoor and outdoor use. HPL Table top.

Weight: 36.12 Kg



FRAME Mesa 200x90cm
FRAME Dinning Table 78 3/4"x35 1/2"



Finishes

finishes

ALUMINIUM
Ref. 54239FB



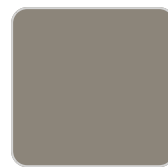
white



smoked



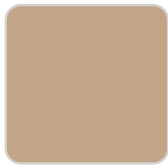
ecru



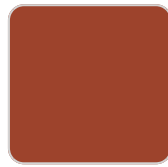
tortora



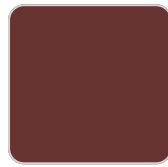
cream



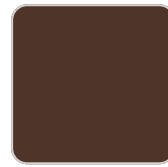
camel



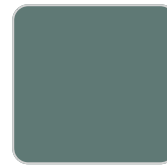
clay



garnet



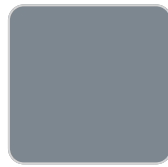
brown



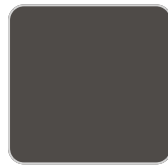
green



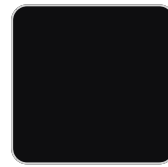
blue



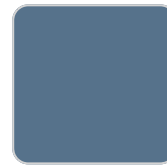
gray



anthracite



black



ocean

Lacquered aluminium profile.

tabletops

HPL
Ref. VVAR02583



VONDOM

white(black edge)

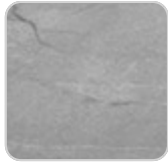
ecru(black edge)

black(black edge)

HPL black edge

Solid Core

Ref. VVAR02584



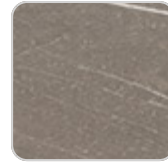
gray stone



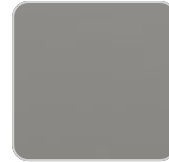
ecru stone



white stone



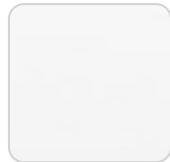
tortora stone



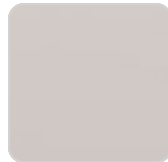
smoked



black stone



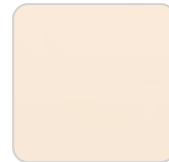
white (white edge)



ecru



tortora



cream



garnet



brown



green



blue



anthracite

Ambients

