

Frame aluminium table 120x120x74

by Ramón Esteve

Frame, outdoor collection by Ramon Esteve, using elementary geometry as a framework, serene and timeless shapes were generated through a process of exploration. The endless possibilities offered by advanced technology and materials served as the inspiration to push boundaries and discover limitless possibilities.

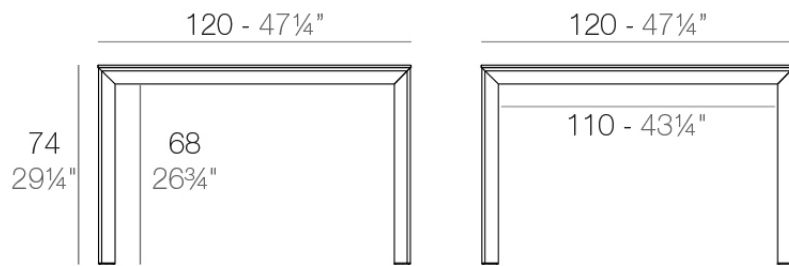


Info

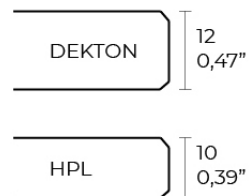
Description

Extruded aluminum with cast lacquered aluminum base. HPL Table top ó Dekton Table top. Item suitable for indoor and outdoor use. HPL Table top.

Weight: 30.02 Kg



FRAME Mesa 120x120cm
FRAME Dining Table 47 1/4"x47 1/4"



Finishes

finishes

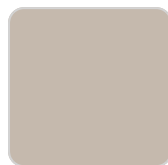
ALUMINIUM
Ref. 54235FB



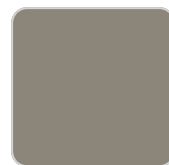
white



smoked



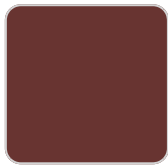
ecru



tortora



cream



garnet



brown



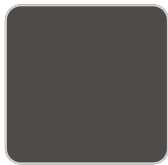
green



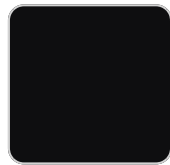
blue



gray



anthracite

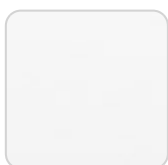


black

Lacquered aluminium profile.

tabletops

HPL
Ref. VVAR02568



VONDOM

white(black edge)

ecru(black edge)

black(black edge)

HPL black edge

Solid Core

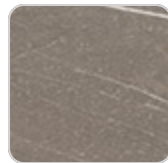
Ref. VVAR02569



smoked



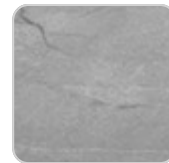
ecru stone



tortora stone



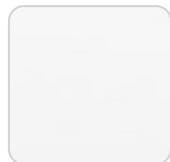
black stone



gray stone



white stone



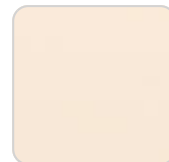
white (white edge)



ecru



tortora



cream



garnet



brown



green



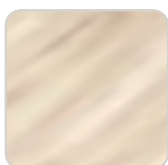
blue



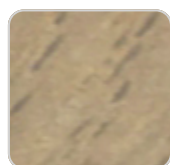
anthracite

Solid Core wood

Ref. VVAR02569



oak1



oak2

Dekton

Ref. VVAR02832

VONDOM



kelya



entzo



danae

Ambients

