

Frame aluminium table 100x100x74

by Ramón Esteve

Frame, outdoor collection by Ramon Esteve, using elementary geometry as a framework, serene and timeless shapes were generated through a process of exploration. The endless possibilities offered by advanced technology and materials served as the inspiration to push boundaries and discover limitless possibilities.



Info

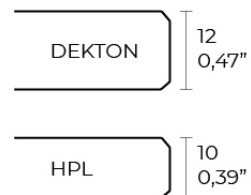
Description

Extruded aluminum with cast lacquered aluminum base. HPL Table top ó Dekton Table top. Item suitable for indoor and outdoor use. HPL Table top.

Weight: 22.92 Kg



FRAME Mesa 100x100cm
FRAME Dinning Table 39 1/4"x39 1/4"



Finishes

finishes

ALUMINIUM
Ref. 54234FB



white



smoked



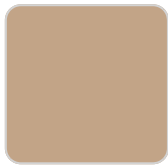
ecru



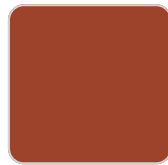
tortora



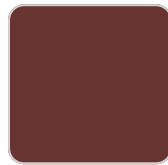
cream



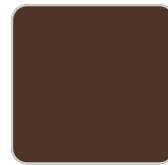
camel



clay



garnet



brown



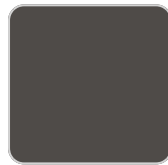
green



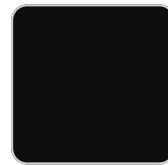
blue



gray



anthracite



black

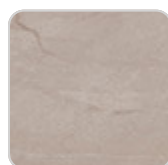


ocean

Lacquered aluminium profile.

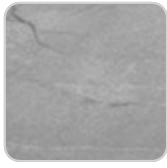
tabletops

Solid Core
Ref. VVAR02564



VONDOM

white stone



gray stone

smoked



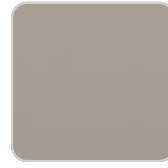
white (white edge)

ecru stone



ecru

tortora stone



tortora

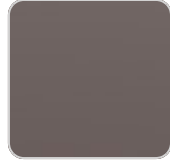
black stone



cream



garnet



brown



green



blue



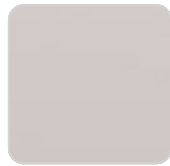
anthracite

HPL

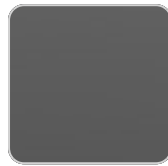
Ref. VVAR02563



white(black edge)



ecru(black edge)



black(black edge)

HPL black edge

Ambients

