

Frame aluminium table 90x90x74

by Ramón Esteve

Frame, outdoor collection by Ramon Esteve, using elementary geometry as a framework, serene and timeless shapes were generated through a process of exploration. The endless possibilities offered by advanced technology and materials served as the inspiration to push boundaries and discover limitless possibilities.



Info

Description

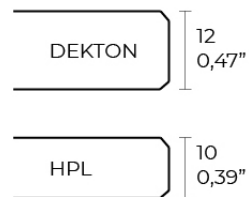
Extruded aluminum with cast lacquered aluminum base. HPL Table top ó Dekton Table top. Item suitable for indoor and outdoor use. HPL Table top.

Weight: 19.63 Kg



FRAME Mesa 90x90cm

FRAME Dinning Table 35½"x35½"



Finishes

finishes

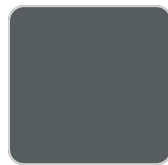
ALUMINIUM
Ref. 54233FM



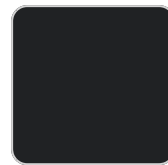
white



british gray



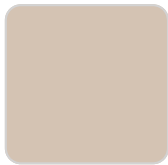
traffic gray



black



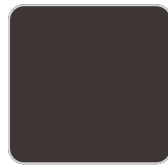
ecru



crema



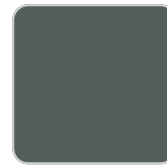
castoro fiber



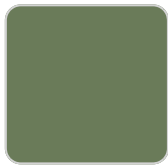
cacao



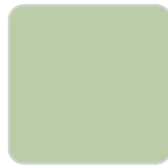
notte blue



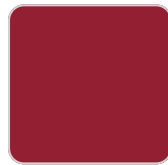
modo green



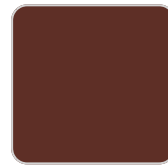
pickle



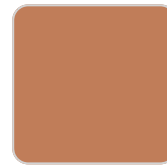
almond



red



purjai red



melon



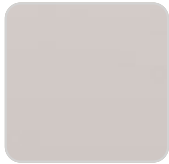
mostaza

Lacquered aluminium profile.

tabletops

HPL
Ref. VVAR02558

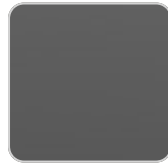
VONDOM



ecru(black edge)



white(black edge)

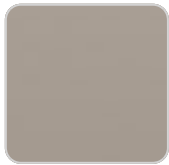


black(black edge)

HPL black edge

Solid Core

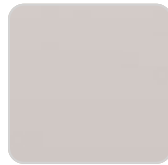
Ref. VVAR02559



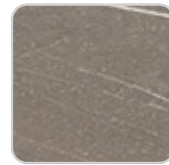
castoro fiber



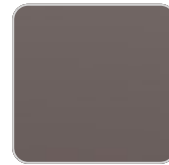
yule brown



piombo gray



pulpis gray



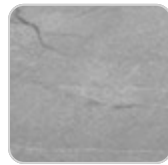
cacao



kandia black



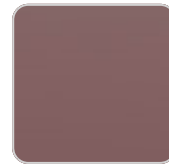
modo green



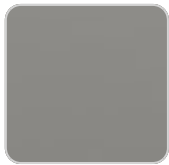
yule gray



gioia bianco



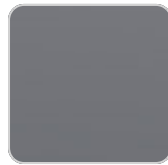
purjai red



british gray



notte blue



traffic gray



white (white edge)



crema

Dekton

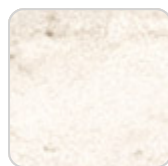
Ref. VVAR02830



kelya



entzo



danae

Ambients

