

Frame aluminium table 80x80x74

by Ramón Esteve

Frame, outdoor collection by Ramon Esteve, using elementary geometry as a framework, serene and timeless shapes were generated through a process of exploration. The endless possibilities offered by advanced technology and materials served as the inspiration to push boundaries and discover limitless possibilities.

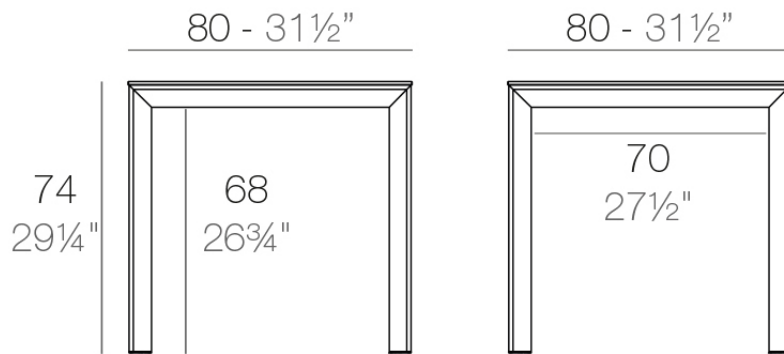


Info

Description

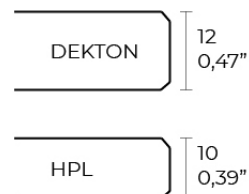
Extruded aluminum with cast lacquered aluminum base. HPL Table top ó Dekton Table top. Item suitable for indoor and outdoor use. HPL Table top.

Weight: 16.78 Kg



FRAME Mesa 80x80cm

FRAME Dinning Table 31 1/2" x 31 1/2"



Finishes

finishes

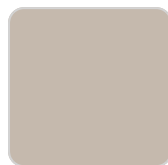
ALUMINIUM
Ref. 54232FB



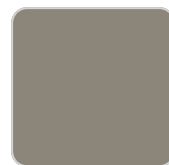
white



smoked



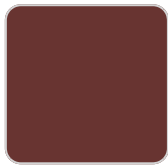
ecru



tortora



cream



garnet



brown



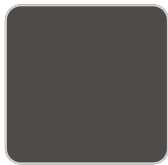
green



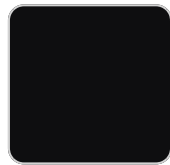
blue



gray



anthracite

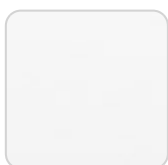


black

Lacquered aluminium profile.

tabletops

HPL
Ref. VVAR02553



VONDOM

white(black edge)

ecru(black edge)

black(black edge)

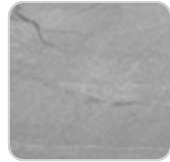
HPL black edge

Solid Core

Ref. VVAR02554



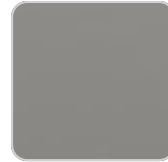
black stone



gray stone



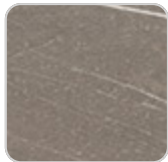
white stone



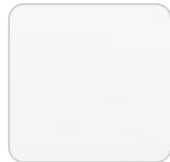
smoked



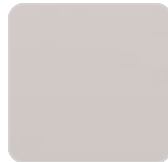
ecru stone



tortora stone



white (white edge)



ecru



tortora



cream



garnet



brown



green



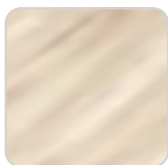
blue



anthracite

Solid Core wood

Ref. VVAR02554



oak1



oak2

Dekton

Ref. VVAR02829

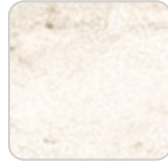
VONDOM



kelya



entzo



danae

Ambients

