

Frame aluminium table 70x70x74

by Ramón Esteve

Frame, outdoor collection by Ramon Esteve, using elementary geometry as a framework, serene and timeless shapes were generated through a process of exploration. The endless possibilities offered by advanced technology and materials served as the inspiration to push boundaries and discover limitless possibilities.

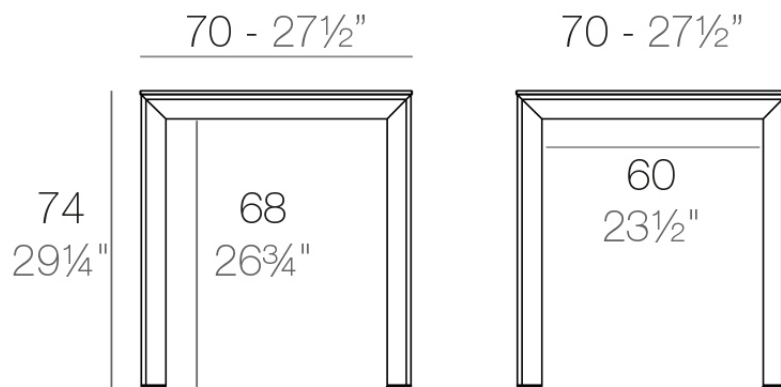


Info

Description

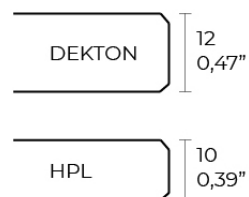
Extruded aluminum with cast lacquered aluminum base. HPL Table top ó Dekton Table top. Item suitable for indoor and outdoor use. HPL Table top.

Weight: 14.23 Kg



FRAME Mesa 70x70cm

FRAME Dining Table 27½"x27½"



Finishes

finishes

ALUMINIUM
Ref. 54231FB



white



smoked



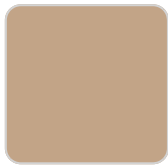
ecru



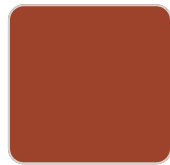
tortora



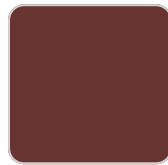
cream



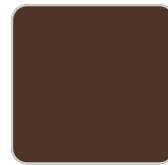
camel



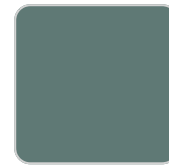
clay



garnet



brown



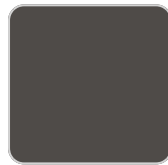
green



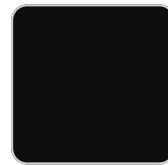
blue



gray



anthracite



black

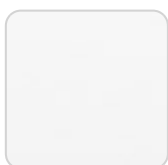


ocean

Lacquered aluminium profile.

tabletops

HPL
Ref. VVAR02548



VONDOM

white(black edge)

ecru(black edge)

black(black edge)

HPL black edge

Solid Core

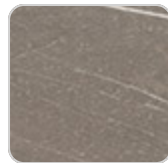
Ref. VVAR02549



smoked



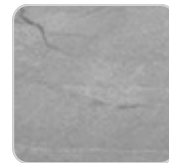
ecru stone



tortora stone



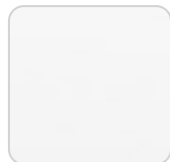
black stone



gray stone



white stone



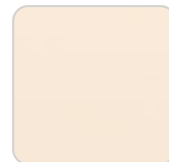
white (white edge)



ecru



tortora



cream



garnet



brown



green



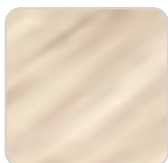
blue



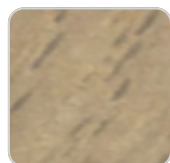
anthracite

Solid Core wood

Ref. VVAR02549



oak1



oak2

Ambients

