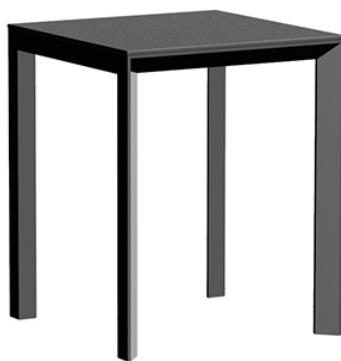


Frame aluminium table 60x60x74

by Ramón Esteve

Frame, outdoor collection by Ramon Esteve, using elementary geometry as a framework, serene and timeless shapes were generated through a process of exploration. The endless possibilities offered by advanced technology and materials served as the inspiration to push boundaries and discover limitless possibilities.



Info

Description

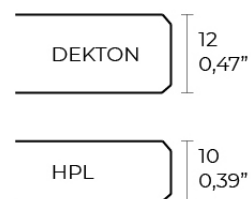
Extruded aluminum with cast lacquered aluminum base. HPL Table top ó Dekton Table top. Item suitable for indoor and outdoor use. HPL Table top.

Weight: 11.88 Kg



FRAME Mesa 60x60cm

FRAME Dinning Table 23 1/2" x 23 1/2"



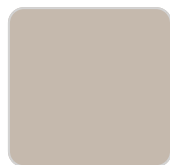
Finishes

finishes

ALUMINIUM
Ref. 54230FB



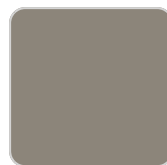
white



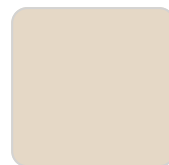
ecru



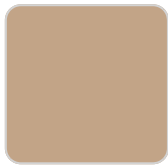
smoked



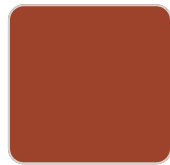
tortora



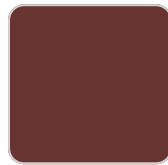
cream



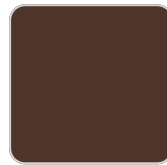
camel



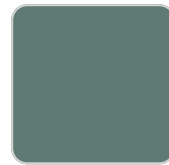
clay



garnet



brown



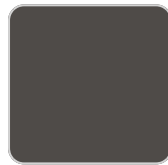
green



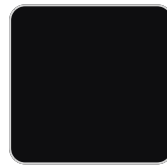
blue



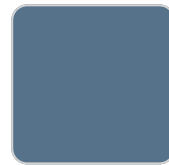
gray



anthracite



black

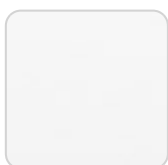


ocean

Lacquered aluminium profile.

tabletops

HPL
Ref. VVAR02536



VONDOM

white(black edge)

ecru(black edge)

black(black edge)

HPL black edge

Solid Core

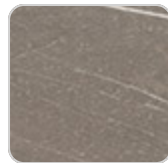
Ref. VVAR02537



smoked



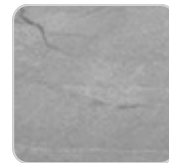
ecru stone



tortora stone



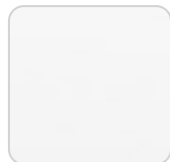
black stone



gray stone



white stone



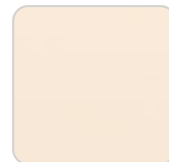
white (white edge)



ecru



tortora



cream



garnet



brown



green



blue



anthracite

Ambients

