

## Quartz dining table ø79

by Ramón Esteve

The Quartz collection of modern chairs and tables, designed by Ramón Esteve for Vondom, has a distinctive appearance characterized by **vertical lines** and triangular profiles. One of its outstanding features is the line of one of its vertices, which creates an impression of lightness, making the furniture seem almost weightless, while still ensuring robust functionality.

Crafted with high quality materials, this modern collection of chairs and tables is perfect for enhancing both indoor and outdoor spaces. With its elegant design and durability, the Quartz collection blends seamlessly into any environment, striking the perfect balance between form and function.

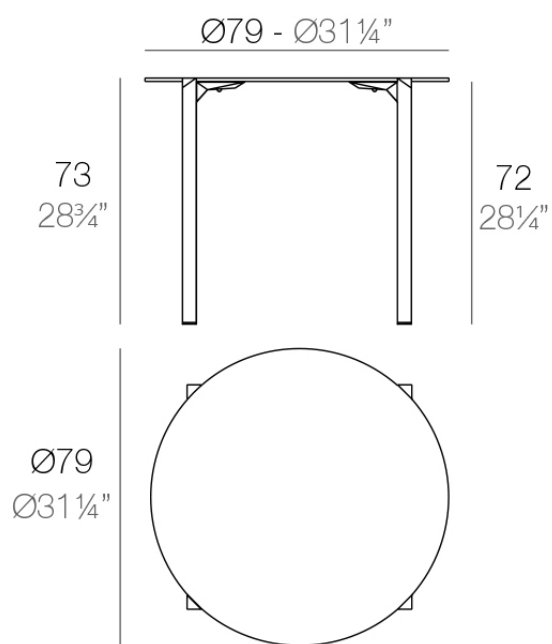


## Info

---

### Description

Weight: 9.7 Kg



QUARTZ Mesa  $\text{Ø}79$   
QUARTZ Table  $\text{Ø}31\frac{1}{4}"$

## Finishes

---

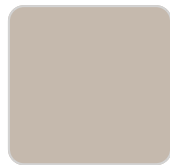
### finishes

---

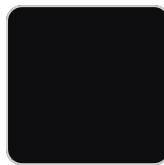
BASIC PP  
Ref. 54218



white



ecru



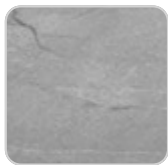
black

Available in various colors

### tabletops

---

Solid Core  
Ref. VVAR02458



gray stone



white stone



smoked



ecru stone



tortora stone



black stone



white (white edge)



ecru



tortora



cream



# VONDOM

garnet

brown

green

blue

anthracite

HPL

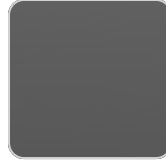
Ref. VVAR02458



white(black edge)



ecru(black edge)



black(black edge)

HPL black edge

Solid Core wood

Ref. VVAR02458



oak1



oak2

