

## Quartz dining table 79x79

by Ramón Esteve

The Quartz collection of modern chairs and tables, designed by Ramón Esteve for Vondom, has a distinctive appearance characterized by **vertical lines** and triangular profiles. One of its outstanding features is the line of one of its vertices, which creates an impression of lightness, making the furniture seem almost weightless, while still ensuring robust functionality.

Crafted with high quality materials, this modern collection of chairs and tables is perfect for enhancing both indoor and outdoor spaces. With its elegant design and durability, the Quartz collection blends seamlessly into any environment, striking the perfect balance between form and function.



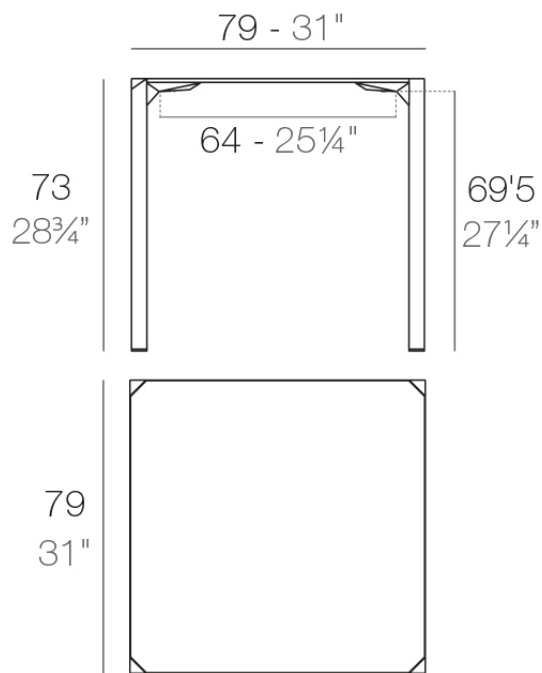
## Info

---

### Description

Made from polypropylene and reinforced with fiberglass manufactured by gas injection. Available in various colors. Suitable for indoor and outdoor use.

Weight: 10.45 Kg



QUARTZ Mesa 79 x 79  
QUARTZ Table 31" x 31"

## Finishes

---

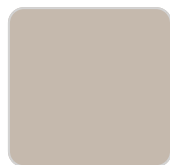
### finishes

---

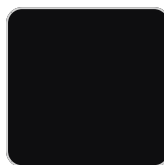
BASIC PP  
Ref. 54205



white



ecru



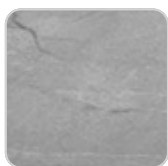
black

Available in various colors

### tabletops

---

Solid Core  
Ref. VVAR02393



gray stone



white stone



smoked



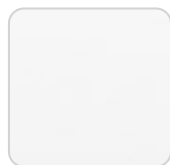
ecru stone



tortora stone



black stone



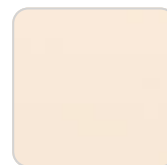
white (white edge)



ecru



tortora



cream



# VONDOM

garnet

brown

green

blue

anthracite

HPL

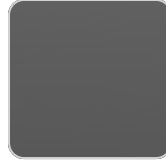
Ref. VVAR02393



white(black edge)



ecru(black edge)



black(black edge)

HPL black edge

Solid Core wood

Ref. VVAR02393



oak1



oak2

