

Quartz dining table ø79

by Ramón Esteve

The Quartz modern chairs and tables collection, designed by Ramón Esteve for Vondom, possesses an distinctive appearance featuring **perpendicular lines** and triangular profiles. Due to the line of one of its vertices this collection appears extremely light.

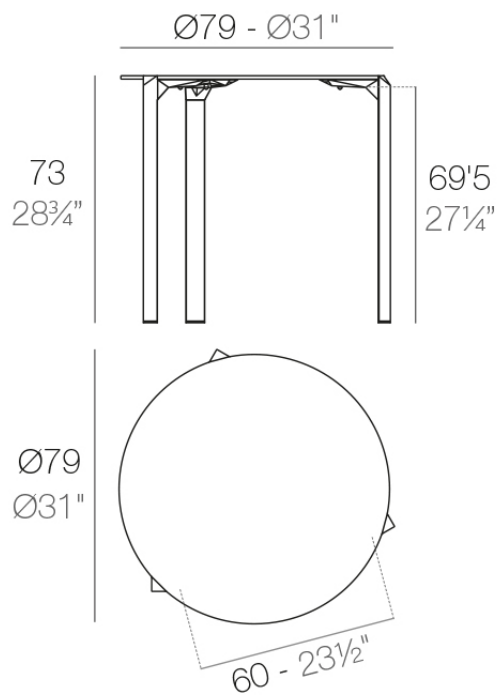


Info

Description

Made from polypropylene and reinforced with fiberglass manufactured by gas injection. Available in various colors. Suitable for indoor and outdoor use.

Weight: 8.31 Kg



QUARTZ Mesa $\text{Ø}79$
QUARTZ Table $\text{Ø}31''$

Finishes

finishes

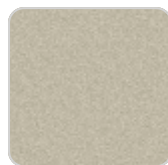
BASIC PP
Ref. 54200



white



black



ecru

Available in various colors

tabletops

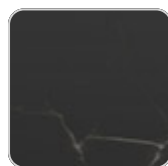
Solid Core
Ref. VVAR02350



pulpis gray



piombo gray



kandia black



cacao



yule gray



modo green



gioia bianco



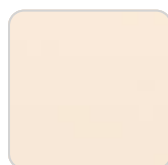
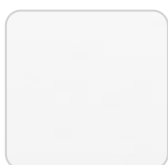
purjai red



british gray



notte blue



VONDOM

white (white edge)

traffic gray

crema

yule brown

castoro fiber

HPL

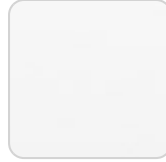
Ref. VVAR02350



black(black edge)



ecru(black edge)



white(black edge)

HPL black edge

