

Quartz chair with arms

by Ramón Esteve

The Quartz modern chairs and tables collection, designed by Ramón Esteve for Vondom, possesses an distinctive appearance featuring **perpendicular lines** and triangular profiles. Due to the line of one of its vertices this collection appears extremely light.

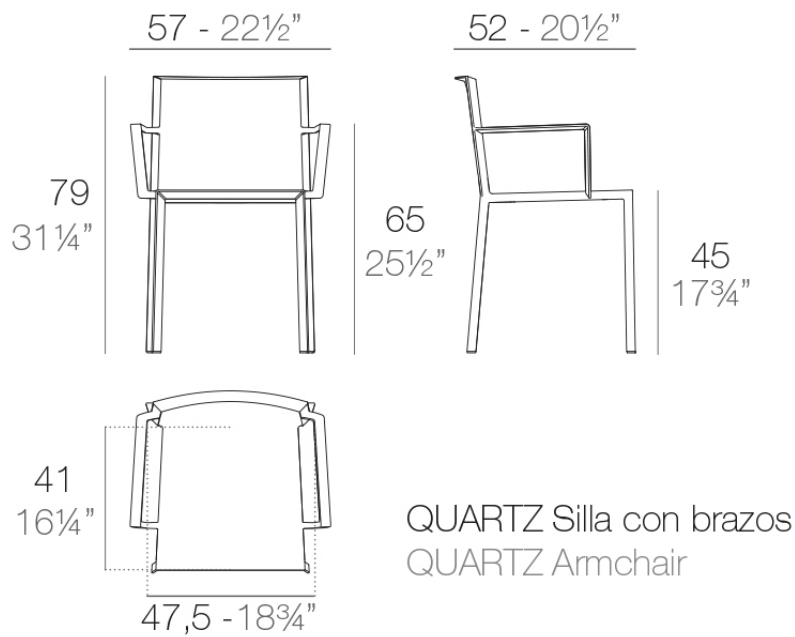


Info

Description

Injected polypropylene with fiber glass. Stackable. Item suitable for indoor and outdoor use.

Weight: 3 Kg



Accessories

- **Fabric**

Fabric

Finishes

finishes

BASIC PP
Ref. 54195



white



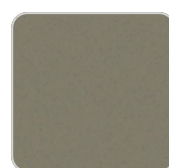
black



bronze



ecru



tortora

Available in various colors

LACQUERED COLOR INJECTION PP
Ref. 54195F



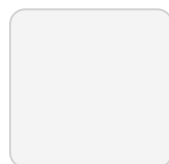
red 3114



anthracite 3106



black 3102



white 3101

—

Ambients

