

## Faz 3-legged double table base

by Ramón Esteve

A commitment to minimalist aesthetics, Faz is a sleek and contemporary ensemble of outdoor furniture and planters designed by Ramón Esteve for Vondom. Esteve's creative vision for Faz transcends mere functionality and aims to integrate and harmonize with different spaces, be they residential or expansive installations. Through a deliberate selection of materials and the strategic incorporation of lighting elements, Esteve has created an atmosphere that exudes serenity, timelessness and an universality. His ability to blend form and function creates an immersive experience where the boundaries between indoors and outdoors are blurred, leaving behind only an impression of cohesive elegance. In short, he is the mastermind behind Faz's ambience.



## Info

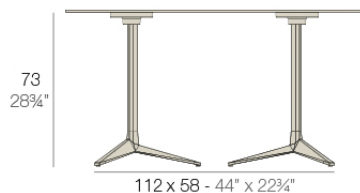
---

### Description

Extruded aluminum tube with cast aluminum base coated with epoxy baked painting. Item suitable for indoor and outdoor use. Table top not included.

Weight: 8.39 Kg

DOUBLE BASE - BASE DOBLE



fixed top / fijo ref. 54166  
collapsible top / abatible ref. 54166T

FAZ BASE DOBLE 112x58 H73  
FAZ DOUBLE BASE 44x22 3/4" H28 3/4"

TABLE TOPS OPTIONS - OPCIONES SOBRES



119 x 69 cm  
46 3/4" x 27 1/4"

## Finishes

---

### finishes

---

#### ALUMINIUM BASE

Ref. 54166T



white



british gray



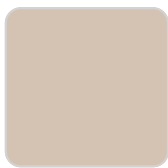
traffic gray



black



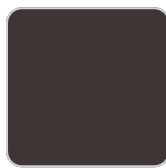
ecru



crema



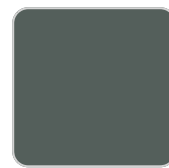
castoro fiber



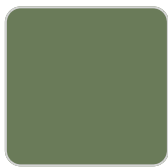
cacao



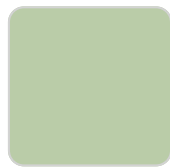
notte blue



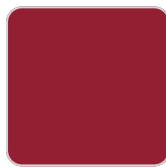
modo green



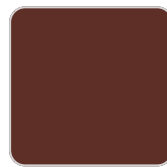
pickle



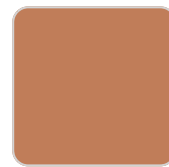
almond



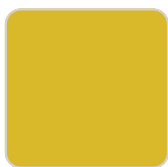
red



purjai red



melon



mostaza

Powder coated aluminum base with 90° collapsable attachment made of polyamide and fiber glass

## Ambients

---

