

Vela shelving system 100x50x10

by Ramón Esteve

Vela Collection, designed by Ramon Esteve for Vondom. The aim of this collection of modern outdoor furniture and planters is to provide the same level of comfort and quality as indoor furniture, while maintaining its distinctive features.

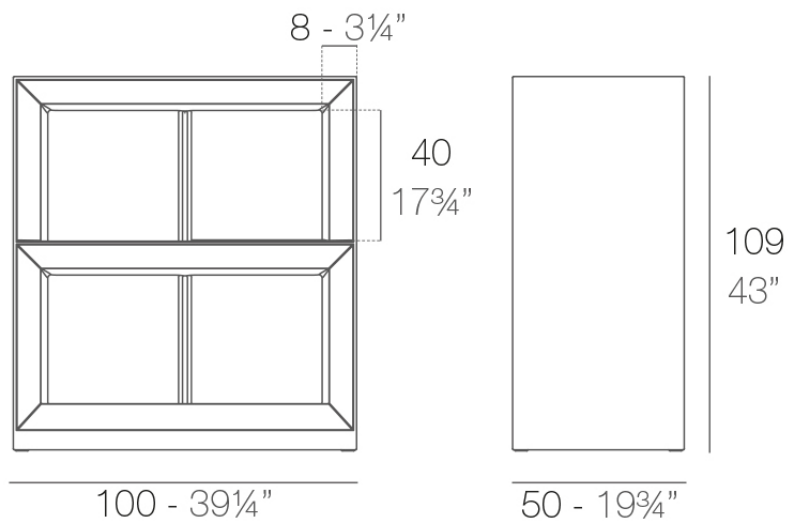


Info

Description

Made of polyethylene resin by rotational moulding. 100% Recyclable. Item suitable for indoor and outdoor use. Available in different finishes.

Weight: 35.06 Kg



VELA Contrabarra
VELA Shelving system

Finishes

finishes

BASIC

Ref. 54123



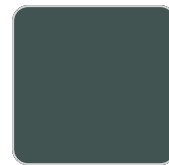
orange



notte blue



crema



green



purjai red



white



black



bronze



steel



anthracite



red



khaki



taupe



ecru

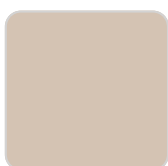


beige

Matt Polyethylene

LACQUERED

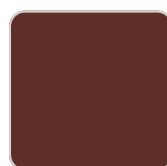
Ref. 54123F



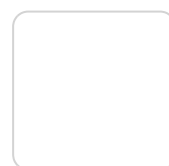
crema



green



purjai red



white



black

VONDOM



bronze



steel



anthracite



red



khaki



taupe



ecru



beige



champany

Lacquered Polyethylene

lighting

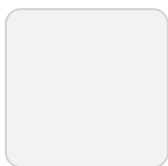
WHITE LED
Ref. 54123W



ice

White internally lit unit with LED technology. Available only in matte ice white finish.

RGBW LED
Ref. 54123L



ice

Unit with internal lighting with RGBW LED technology and remote control unit for switching colors. Available only in matte ice white finish. Remote control included.

VONDOM

RGBW LED DMX

Ref. 54123D



ice

Unit with internal lighting with RGBW LED technology and remote control unit for switching colors. Also controlled by DMX-1024 (wireless), enabling communication between one or more products simultaneously via the DMX transmitter (not included). There are two options to choose from: Professional XLR DMX and Home WIFI DMX. (Remote control included).

Optional battery

RGBW LED BATTERY

Ref. 54123Y

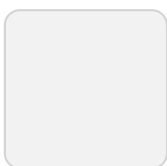


ice

Unit with internal lighting with battery-powered RGBW LED technology. Includes charger and remote control for switching colors and charger. Available only in matte ice white finish.

RGBW LED DMX BATTERY

Ref. 54123DY



ice

Unit with internal lighting with RGBW LED technology and remote control unit for

VONDOM

switching colors. Also controlled by DMX-1024 (wireless), enabling communication between one or more products simultaneously via the DMX transmitter (not included). There are two options to choose from: Professional XLR DMX and Home WIFI DMX. (Remote control included).

Ambients

