

Frame bar table 50x50x100

by Ramón Esteve

Frame, outdoor collection by Ramon Esteve, using elementary geometry as a framework, serene and timeless shapes were generated through a process of exploration. The endless possibilities offered by advanced technology and materials served as the inspiration to push boundaries and discover limitless possibilities.

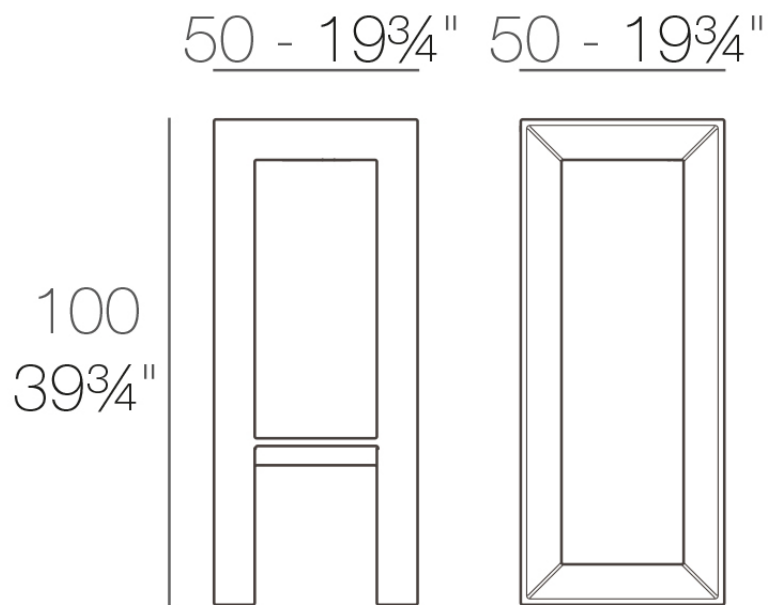


Info

Description

Made of polyethylene resin by rotational moulding. 100% Recyclable. Item suitable for indoor and outdoor use. Available in different finishes.

Weight: 10 Kg



FRAME Mesa Alta
FRAME Bar Table

Finishes

finishes

BASIC

Ref. 54075



white 2001



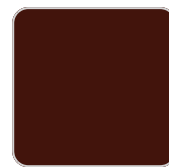
ecru 2003



tortora 2004



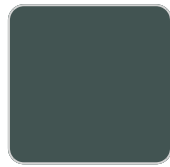
cream 2017



garnet 2015



brown 2008



green 2016



blue 2018



gray 2005



anthracite 2006



black 2002



ice 2101

Matt Polyethylene

LACQUERED

Ref. 54075F



white 3101



ecru 3103



tortora 3104



cream 3117



garnet 3113

VONDOM



brown 3125



green 3116



blue 3118



gray 3105



anthracite 3106



black 3102

Lacquered Polyethylene

Ambients

