

Pal nano planter ø18x36

by Karim Rashid

Pal is, as the name suggests, a friendly and modern line of **indoor & outdoor furniture design** by Karim Rashid for the Spanish brand Vondom. This collection features a range of design furniture that is **exclusive, minimalistic, and comes in a variety of colors**.

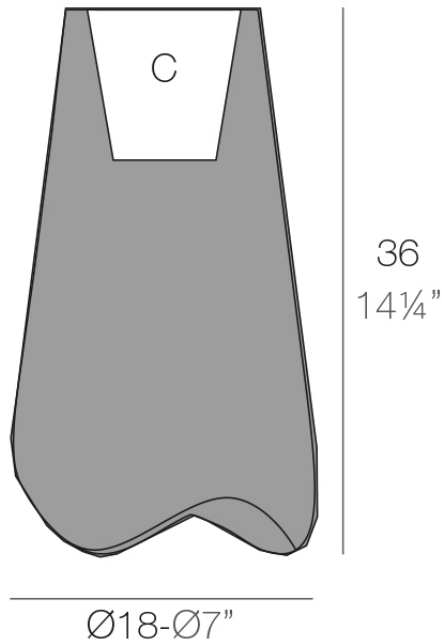


Info

Description

Pot made of polyethylene resin by rotational moulding. 100% Recyclable. Item suitable for indoor and outdoor use. Available in different finishes.

Weight: 0.95 Kg



PAL Nano Macetero 36
PAL Nano Planter 36

C = 2 L
C = ½ gal

Finishes

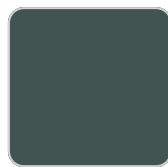
finishes

BASIC

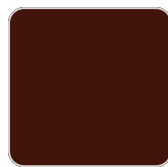
Ref. 51016A



crema



green



purjai red



orange



ice



notte blue



white



black



bronze



steel



anthracite



red



khaki



taupe



ecru



beige

Matt Polyethylene

LACQUERED

Ref. 51016F

VONDOM



crema



purjai red



orange



ice



notte blue



white



black



bronze



steel



anthracite



red



khaki



taupe



ecru



beige



modo green



champany

Lacquered Polyethylene

lighting

WHITE LED
Ref. 51016W



ice



white



black



steel

White internally lit unit with LED technology. Available only in matte ice white finish.

Ambients

