

Cushion 60x60

by Ramón Esteve

Designed by Ramón Esteve, the Vineyard collection is a testament to the excellence of wooden modern outdoor furniture crafted with a harmonious fusion of aluminum and wood. This collection not only embodies a modern aesthetic, but also exudes a rustic warmth that blends effortlessly into a variety of outdoor spaces.

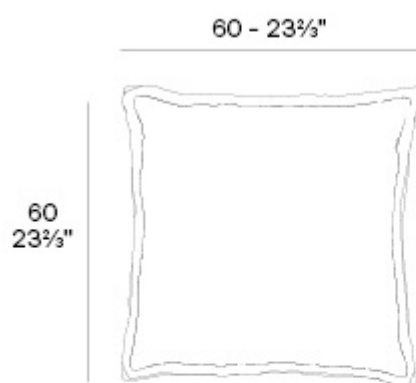
Each piece in the Vineyard collection exemplifies Ramón Esteve's signature craftsmanship and meticulous attention to detail, ensuring both style and durability in outdoor furnishings. Ideal for those who appreciate quality and sophistication, this collection offers a perfect blend of form and function.



Info

Description

Weight: 1.65 Kg



Vineyard. Pillow 60x60cm
Vineyard. Cojín 60x60cm
50100

Finishes

DECORATIVE CUSHIONS

Ref. 50100

fabric

GETARIA

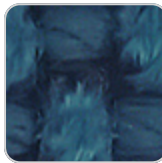
Ref. 50100



aphrodite 10013
getaria



aquamarine 10003
getaria



green 10053 getaria

Premium high density 100% acrylic fabric, available in a wide range of colors.

PORTONOVO

Ref. 50100



clay 10156 portonovo



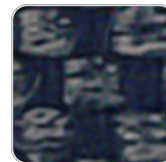
anthracite 10164
portonovo



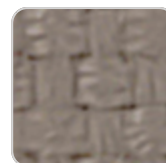
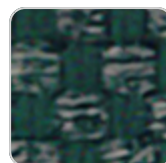
gray 10163 portonovo



mustard 10155
portonovo



blue 10162 portonovo



VONDOM

camel 10154
portonovo



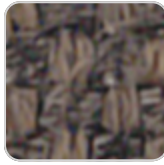
jade 10159 portonovo

ocean 10161
portonovo



ecru 10151 portonovo

cream 10153
portonovo



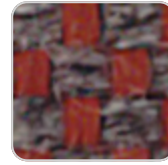
brown 10158
portonovo

green 10160
portonovo



white 10150
portonovo

tortora 10152
portonovo



garnet 10157
portonovo



black 10165
portonovo

100% acrylic fabric, with a flat and simple design, which adapts to any decorative style.

ALTEA Ref. 50100



tortora 1102 altea



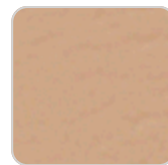
white 1100 altea



ecru 1111 altea



cream 1103 altea



camel 1120 altea



clay 1122 altea



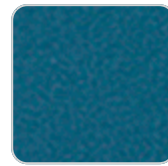
garnet 1106 altea



brown 1104 altea



jade 1125 altea



ocean 1123 altea



blue 1114 altea



gray 1101 altea



anthracite 1124 altea



black 1105 altea

Soft outdoor fabric with leather-like texture.

