

## Cushion 60x30

by Ramón Esteve

The Tablet collection is a modern outdoor sofa designed by Ramon Esteve for Vondom. This exceptional piece of outdoor furniture combines cutting-edge technology with the flexibility and versatility of sectional composition. Emphasizing duality, identity and integration, it stands out in modern spaces. Produced and designed in Europe, it reflects a commitment to quality and innovation that enhances any outdoor environment.

The character of this modern outdoor sofa blends seamlessly with its surroundings, enhancing any space it occupies. Its adaptable design is perfect for a variety of outdoor spaces.

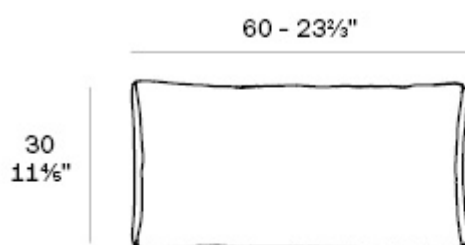


## Info

---

### Description

Weight: 1.2 Kg



Tablet. Pillow 30x60cm  
Tablet. Cojin 30x60cm  
50002

## Finishes

---

---

### DECORATIVE CUSHIONS

Ref. 50002

### fabric

---

#### GETARIA

Ref. 50002



green 10053 getaria



aphrodite 10013  
getaria



aquamarine 10003  
getaria

Premium high density 100% acrylic fabric, available in a wide range of colors.

#### PORTONOVO

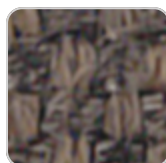
Ref. 50002



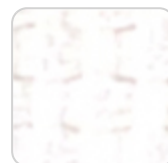
ecru 10151 portonovo



jade 10159 portonovo



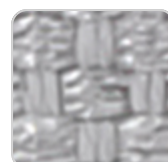
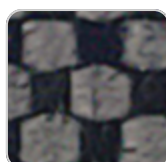
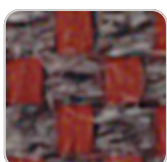
brown 10158  
portonovo



white 10150  
portonovo



black 10165  
portonovo



# VONDOM

garnet 10157  
portonovo



blue 10162 portonovo

anthracite 10164  
portonovo



camel 10154  
portonovo

clay 10156 portonovo



cream 10153  
portonovo

gray 10163 portonovo



ocean 10161  
portonovo

mustard 10155  
portonovo



tortora 10152  
portonovo



green 10160  
portonovo

100% acrylic fabric, with a flat and simple design, which adapts to any decorative style.

## LLANES

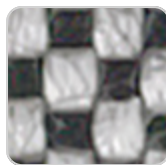
Ref. 50002



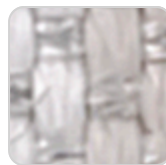
tortora 10181 llanes



crema 10180 llanes



anthracite 10183  
llanes



gray 10182 llanes

## MORAIRA

Ref. 50002



ecru 10365 moraira



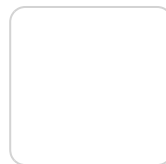
gray 10364 moraira



blue 10363 moraira



green 10362 moraira



clay 10361 moraira



# VONDOM

camel 10360 moraira

## TEGUISE Ref. 50002



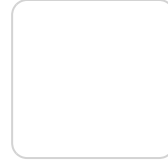
camel 10370 teguise



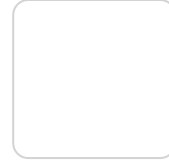
ecru 10375 teguise



gray 10374 teguise



blue 10373 teguise



green 10372 teguise



clay 10371 teguise

## ROSES Ref. 50002



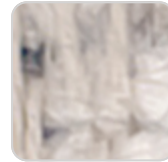
green 10403 roses



garnet 10402 roses



cream 10400 roses



blue 10405 roses



tortora 10404 roses

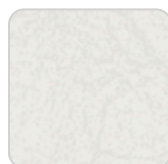
## ALTEA Ref. 50002



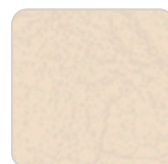
tortora 1102 altea



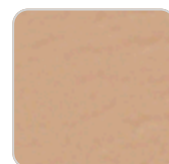
white 1100 altea



ecru 1111 altea



cream 1103 altea



camel 1120 altea

# VONDOM



clay 1122 altea



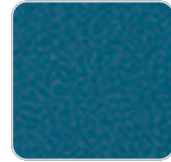
garnet 1106 altea



brown 1104 altea



jade 1125 altea



ocean 1123 altea



blue 1114 altea



gray 1101 altea



anthracite 1124 altea



black 1105 altea

Soft outdoor fabric with leather-like texture.

BAIONA  
Ref. 50002

High density 100% acrylic fabric, which provides a solid feel. It has an irregular pattern that adds a handcrafted touch.

CALELLA  
Ref. 50002

PFAS-free 100% acrylic fabric with a rich and unusual texture and an exceptional softness, which enhances the comfort of the furniture.

FISTERRA  
Ref. 50002

100% acrylic fabric, with a distinctive irregular marbled pattern and a soft feel.

ZUMAIA  
Ref. 50002

# VONDOM

Elegant 100% acrylic fabric, with a soft terry, pleasant to the touch and a unique color combination.

## SUANCES

Ref. 50002

Bocle fabric, which stands out for its warmth and softness, with matching colors that add depth and elegance.

## RIBADEO

Ref. 50002

Soft fabric with marbled yarns of different thicknesses that create a rich and visually interesting texture. Its Linen look adds a touch of natural style.

## LOURO

Ref. 50002

Soft and versatile fabric, which presents a neutral base color that makes it easy to combine with different colors and fabrics.

## AROUSA

Ref. 50002

Soft outdoor fabric with shiny finish.

