

Cushion 50x50

by Ramón Esteve

The Tablet collection is a modern outdoor sofa designed by Ramon Esteve for Vondom. This exceptional piece of outdoor furniture combines cutting-edge technology with the flexibility and versatility of sectional composition. Emphasizing duality, identity and integration, it stands out in modern spaces. Produced and designed in Europe, it reflects a commitment to quality and innovation that enhances any outdoor environment.

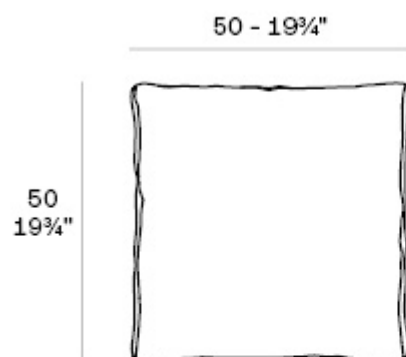
The character of this modern outdoor sofa blends seamlessly with its surroundings, enhancing any space it occupies. Its adaptable design is perfect for a variety of outdoor spaces.



Info

Description

Weight: 1.3 Kg



Tablet. Pillow 50x50cm
Tablet. Cojin 50x50cm
50000

Finishes

DECORATIVE CUSHIONS

Ref. 50000

fabric

GETARIA

Ref. 50000



green 10053 getaria



aphrodite 10013
getaria



aquamarine 10003
getaria

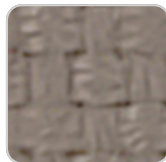
Premium high density 100% acrylic fabric, available in a wide range of colors.

PORTONOVO

Ref. 50000



green 10160
portonovo



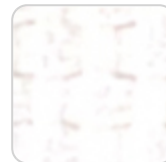
tortora 10152
portonovo



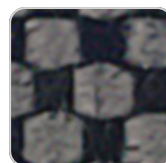
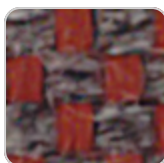
ecru 10151 portonovo



jade 10159 portonovo



white 10150
portonovo



VONDOM

brown 10158
portonovo



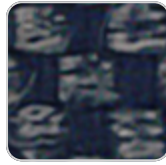
gray 10163 portonovo

black 10165
portonovo



mustard 10155
portonovo

garnet 10157
portonovo



blue 10162 portonovo

anthracite 10164
portonovo



camel 10154
portonovo

clay 10156 portonovo



ocean 10161
portonovo



cream 10153
portonovo

100% acrylic fabric, with a flat and simple design, which adapts to any decorative style.

ALTEA Ref. 50000



tortora 1102 altea



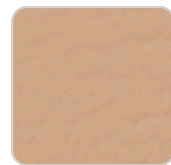
white 1100 altea



ecru 1111 altea



cream 1103 altea



camel 1120 altea



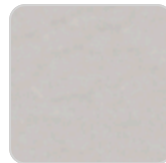
clay 1122 altea



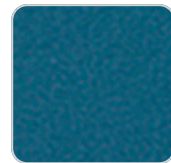
garnet 1106 altea



brown 1104 altea



jade 1125 altea



ocean 1123 altea



blue 1114 altea



gray 1101 altea



anthracite 1124 altea



black 1105 altea

Soft outdoor fabric with leather-like texture.

