

Marquis planter ø30x83

by JM Ferrero

Marquis, designed by Estudi{H}ac for Vondom, is a modern line of planters **originating from the inspiration of diamond cutting** that boasts a striking polygonal design reminiscent of cut gemstones. In addition to the planters, the collection also features an **exquisitely designed table lamp**.

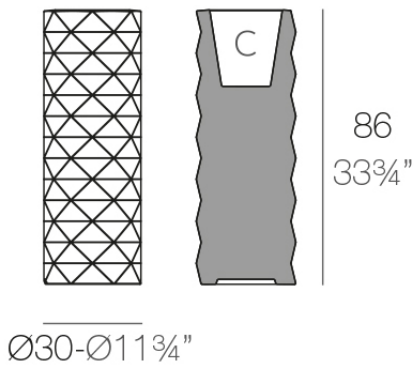


Info

Description

Made of polyethylene resin by rotational moulding. 100% Recyclable. Item suitable for indoor and outdoor use. Available in different finishes.

Weight: 5 Kg



MARQUIS Maceta Ø30x86

C = 10 L (2.6 gal)

MARQUIS Planter Ø11 3/4"x33 3/4"

C = 2 3/4 gal

Finishes

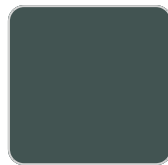
finishes

BASIC

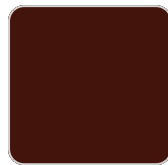
Ref. 47084A



crema



green



purjai red



orange



ice



notte blue



white



black



bronze



steel



anthracite



red



khaki



taupe



ecru



beige

Matt Polyethylene

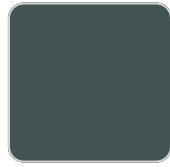
SELF-WATERING

Ref. 47084R

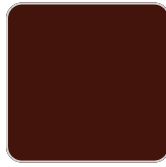
VONDOM



crema



green



purjai red



orange



ice



notte blue



white



black



bronze



steel



anthracite



red



khaki



taupe



ecru



beige

Self-watering system included in all planters except those with basic finish

LACQUERED

Ref. 47084F



crema



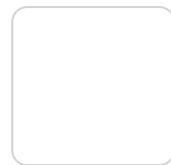
purjai red



orange



notte blue



white



black



bronze



steel



anthracite



red

VONDONM



khaki



taupe



ecru



beige



modo green



champany

Lacquered Polyethylene

lighting

WHITE LED
Ref. 47084W



ice

White internally lit unit with LED technology. Available only in matte ice white finish.

RGBW LED
Ref. 47084L



ice

Unit with internal lighting with RGBW LED technology and remote control unit for switching colors. Available only in matte ice white finish. Remote control included.

VONDOM

RGBW LED DMX

Ref. 47084D



ice

Unit with internal lighting with RGBW LED technology and remote control unit for switching colors. Also controlled by DMX-1024 (wireless), enabling communication between one or more products simultaneously via the DMX transmitter (not included). There are two options to choose from: Professional XLR DMX and Home WIFI DMX. (Remote control included).

Optional battery

RGBW LED BATTERY

Ref. 47084Y

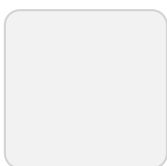


ice

Unit with internal lighting with battery-powered RGBW LED technology. Includes charger and remote control for switching colors and charger. Available only in matte ice white finish.

RGBW LED DMX BATTERY

Ref. 47084DY



ice

Unit with internal lighting with RGBW LED technology and remote control unit for

VONDOM

switching colors. Also controlled by DMX-1024 (wireless), enabling communication between one or more products simultaneously via the DMX transmitter (not included). There are two options to choose from: Professional XLR DMX and Home WIFI DMX. (Remote control included).

Ambients

