

Marquis planter ø40x60

by JM Ferrero

Marquis, designed by Estudi{H}ac for Vondom, is a modern line of planters **originating from the inspiration of diamond cutting** that boasts a striking polygonal design reminiscent of cut gemstones. In addition to the planters, the collection also features an **exquisitely designed table lamp**.

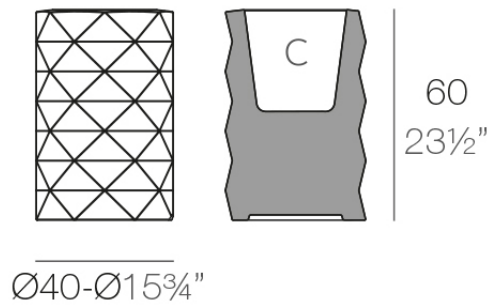


Info

Description

Made of polyethylene resin by rotational moulding. 100% Recyclable. Item suitable for indoor and outdoor use. Available in different finishes.

Weight: 5.5 Kg



MARQUIS Maceta Ø40x60

C = 23 L 23 cm

MARQUIS Planter Ø15³/₄"x23¹/₂"

C = 6 gal 11 L

Finishes

finishes

BASIC

Ref. 47083A



orange



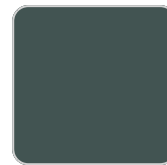
notte blue



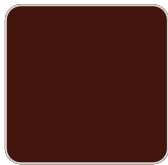
ice



crema



green



purjai red



white



black



bronze



steel



anthracite



red



khaki



taupe



ecru



beige



for lacquering

Matt Polyethylene

SELF-WATERING

Ref. 47083R

VONDOM



orange



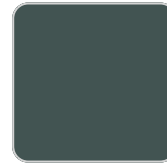
notte blue



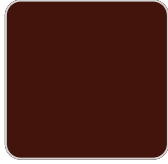
ice



crema



green



purjai red



white



black



bronze



steel



anthracite



red



khaki



taupe



ecru



beige

Self-watering system included in all planters except those with basic finish

LACQUERED

Ref. 47083F



orange



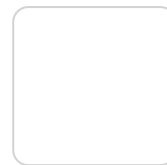
notte blue



crema



purjai red



white



black



bronze



steel



anthracite



red

VONDOM



khaki



taupe



ecru



beige



modo green



champany

Lacquered Polyethylene

lighting

WHITE LED

Ref. 47083W

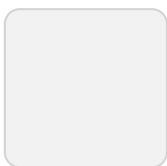


ice

White internally lit unit with LED technology. Available only in matte ice white finish.

RGBW LED

Ref. 47083L



ice

Unit with internal lighting with RGBW LED technology and remote control unit for switching colors. Available only in matte ice white finish. Remote control included.

VONDOM

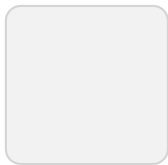
RGBW LED DMX
Ref. 47083D



ice

Unit with internal lighting with RGBW LED technology and remote control unit for switching colors. Also controlled by DMX-1024 (wireless), enabling communication between one or more products simultaneously via the DMX transmitter (not included). There are two options to choose from: Professional XLR DMX and Home WIFI DMX. (Remote control included).
Optional battery

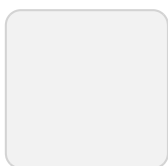
RGBW LED BATTERY
Ref. 47083Y



ice

Unit with internal lighting with battery-powered RGBW LED technology. Includes charger and remote control for switching colors and charger. Available only in matte ice white finish.

RGBW LED DMX BATTERY
Ref. 47083DY



ice

Unit with internal lighting with RGBW LED technology and remote control unit for

VONDOM

switching colors. Also controlled by DMX-1024 (wireless), enabling communication between one or more products simultaneously via the DMX transmitter (not included). There are two options to choose from: Professional XLR DMX and Home WIFI DMX. (Remote control included).

Ambients

