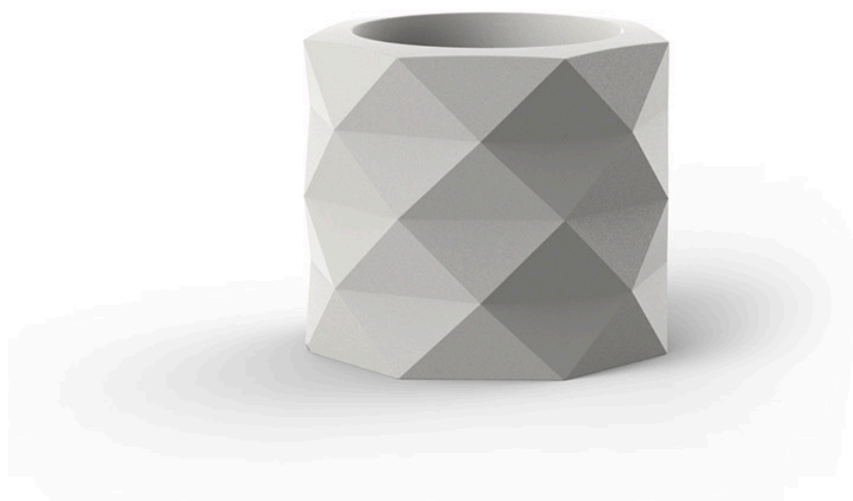


Marquis planter ø60x50

by JM Ferrero

Marquis, designed by Estudi{H}ac for Vondom, is a modern line of planters **originating from the inspiration of diamond cutting** that boasts a striking polygonal design reminiscent of cut gemstones. In addition to the planters, the collection also features an **exquisitely designed table lamp**.

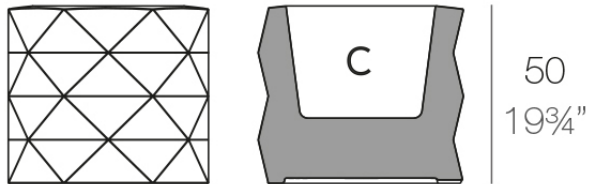


Info

Description

Made of polyethylene resin by rotational moulding. 100% Recyclable. Item suitable for indoor and outdoor use. Available in different finishes.

Weight: 8.5 Kg



Ø60-Ø23½"

MARQUIS Maceta Ø60x50

C = 60 L 32 dm³

MARQUIS Planter Ø23½"x19¾"

C = 15¾ gal 60 L

Finishes

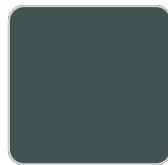
finishes

BASIC

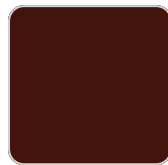
Ref. 47081A



crema



green



purjai red



orange



notte blue



ice



white



black



bronze



steel



anthracite



red



khaki



taupe



ecru



beige

Matt Polyethylene

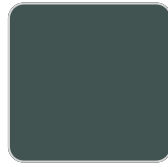
SELF-WATERING

Ref. 47081R

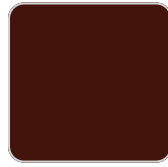
VONDOM



crema



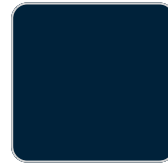
green



purjai red



orange



notte blue



ice



white



black



bronze



steel



anthracite



red



khaki



taupe



ecru



beige

Self-watering system included in all planters except those with basic finish

LACQUERED

Ref. 47081F



crema



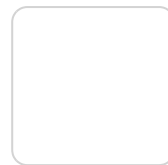
purjai red



orange



notte blue



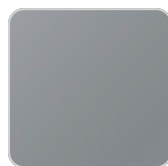
white



black



bronze



steel



anthracite



red

VONDOM



khaki



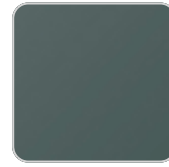
taupe



ecru



beige



modo green



champany

Lacquered Polyethylene

lighting

WHITE LED

Ref. 47081W

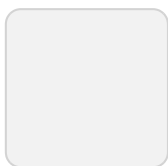


ice

White internally lit unit with LED technology. Available only in matte ice white finish.

RGBW LED

Ref. 47081L



ice

Unit with internal lighting with RGBW LED technology and remote control unit for switching colors. Available only in matte ice white finish. Remote control included.

VONDOM

RGBW LED DMX
Ref. 47081D



ice

Unit with internal lighting with RGBW LED technology and remote control unit for switching colors. Also controlled by DMX-1024 (wireless), enabling communication between one or more products simultaneously via the DMX transmitter (not included). There are two options to choose from: Professional XLR DMX and Home WIFI DMX. (Remote control included).
Optional battery

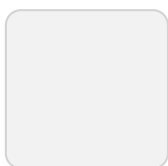
RGBW LED BATTERY
Ref. 47081Y



ice

Unit with internal lighting with battery-powered RGBW LED technology. Includes charger and remote control for switching colors and charger. Available only in matte ice white finish.

RGBW LED DMX BATTERY
Ref. 47081DY



ice

Unit with internal lighting with RGBW LED technology and remote control unit for

VONDOM

switching colors. Also controlled by DMX-1024 (wireless), enabling communication between one or more products simultaneously via the DMX transmitter (not included). There are two options to choose from: Professional XLR DMX and Home WIFI DMX. (Remote control included).

Ambients

